

**GRID SYSTEM OPERATION SUMMARY (PENINSULAR MALAYSIA)**

	<b>FORECAST</b>	<b>ACTUAL</b>	<b>VARIANCE</b>
<b>Maximum Demand for 13 August 2013</b>	14,640 MW	14,479 MW	-1.10%
<b>Energy Demand for 13 August 2013</b>	306.44 GWh	304.41 GWh	-0.66%
<b>Highest Maximum Demand (13 May 2013)</b>	16,298 MW	16,562 MW	1.62%
<b>Highest Daily Energy Demand (25 June 2013)</b>	345.88 GWh	345.25 GWh	-0.18%

\*New MD  
\*New Energy

Prepared by:

Electricity Market Operations

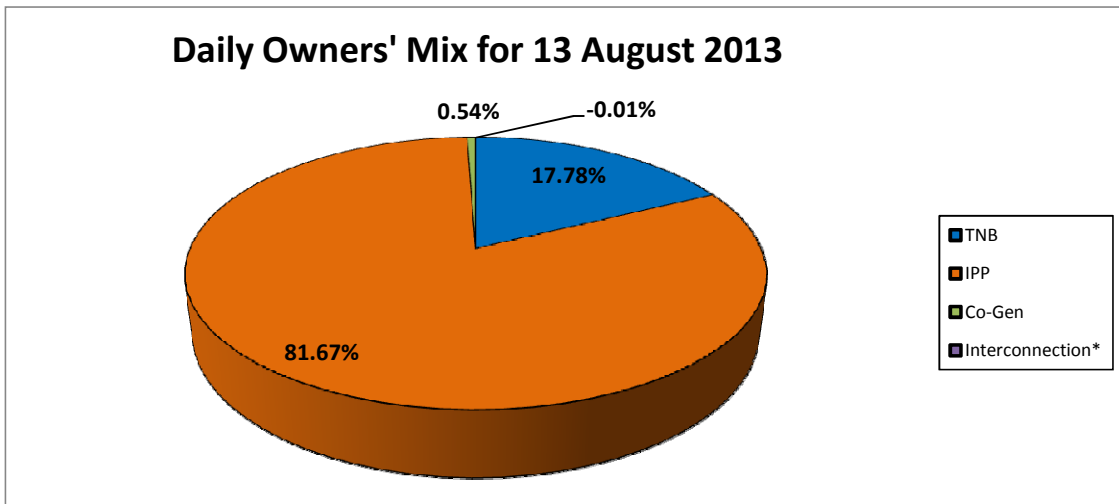
Electricity Supply & Market Regulations Dept.

Energy Commission Malaysia

14-Aug-13

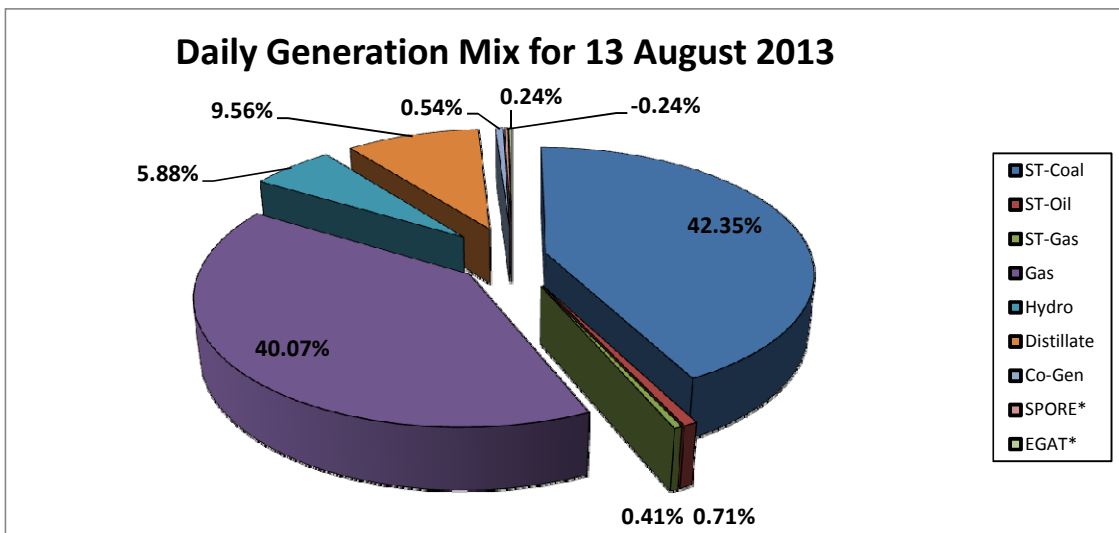
**Daily Owners' Mix for 13 August 2013**

TNB	54,097 MWh
IPP	248,468 MWh
Co-Gen	1,648 MWh
Interconnection*	(17) MWh



**Daily Generation Mix for 13 August 2013**

ST-Coal	129,522 MWh
ST-Oil	2,177 MWh
ST-Gas	1,259 MWh
Gas	122,546 MWh
Hydro	17,996 MWh
Distillate	29,245 MWh
Co-Gen	1,648 MWh
SPORE*	(739) MWh
EGAT*	722 MWh



\*Negative = energy is imported from Singapore and Thailand  
 Positive = energy is exported to Singapore and Thailand