

**GRID SYSTEM OPERATION SUMMARY (PENINSULAR MALAYSIA)**

	<b>FORECAST</b>	<b>ACTUAL</b>	<b>VARIANCE</b>	
<b>Maximum Demand for 11 August 2013</b>	11,741 MW	11,386 MW	-3.02%	
<b>Energy Demand for 11 August 2013</b>	235.91 GWh	235.86 GWh	-0.02%	
<b>Highest Maximum Demand (13 May 2013)</b>	16,298 MW	16,562 MW	1.62%	<b>*New MD</b>
<b>Highest Daily Energy Demand (25 June 2013)</b>	345.88 GWh	345.25 GWh	-0.18%	<b>*New Energy</b>

Prepared by:

Electricity Market Operations

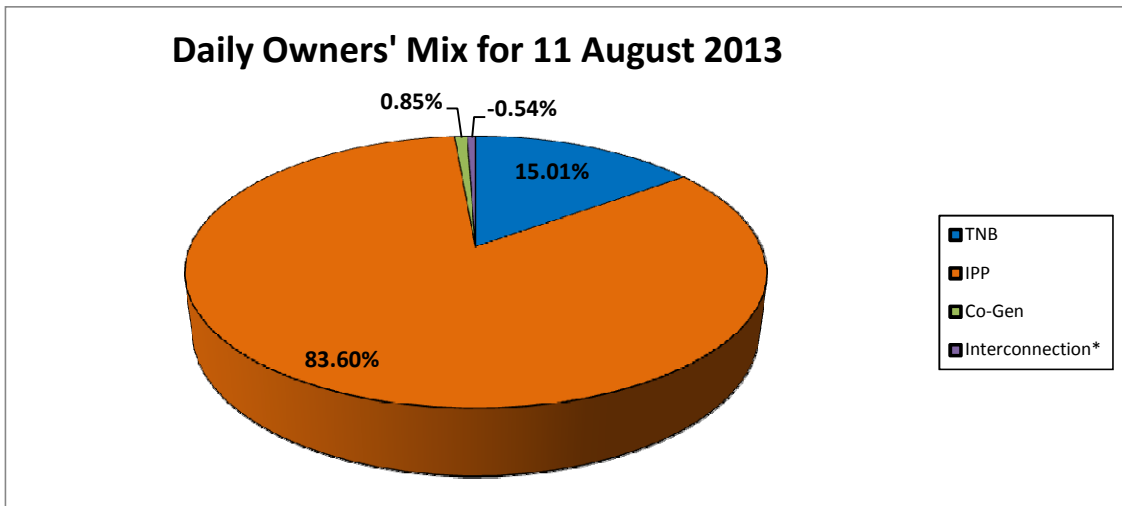
Electricity Supply & Market Regulations Dept.

Energy Commission Malaysia

12-Aug-13

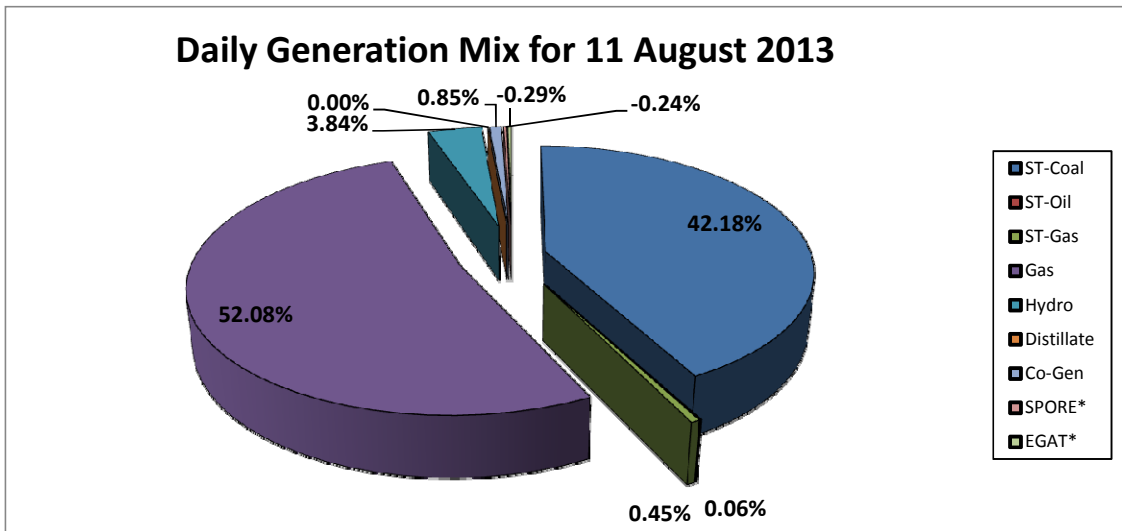
**Daily Owners' Mix for 11 August 2013**

TNB	35,411 MWh
IPP	197,174 MWh
Co-Gen	2,007 MWh
Interconnection*	(1,266) MWh



**Daily Generation Mix for 11 August 2013**

ST-Coal	99,485 MWh
ST-Oil	140 MWh
ST-Gas	1,068 MWh
Gas	122,835 MWh
Hydro	9,057 MWh
Distillate	- MWh
Co-Gen	2,007 MWh
SPORE*	(575) MWh
EGAT*	(691) MWh



\*Negative = energy is imported from Singapore and Thailand  
 Positive = energy is exported to Singapore and Thailand