

## GRID SYSTEM OPERATION SUMMARY (PENINSULAR MALAYSIA)

	FORECAST	ACTUAL	VARIANCE
Maximum Demand for 10 August 2013	11,179 MW	11,332 MW	1.37%
Energy Demand for 10 August 2013	229.03 GWh	234.28 GWh	2.29%
Highest Maximum Demand (13 May 2013)	16,298 MW	16,562 MW	1.62% <b>*New MD</b>
Highest Daily Energy Demand (25 June 2013)	345.88 GWh	345.25 GWh	-0.18% <b>*New Energy</b>

Prepared by:

Electricity Market Operations

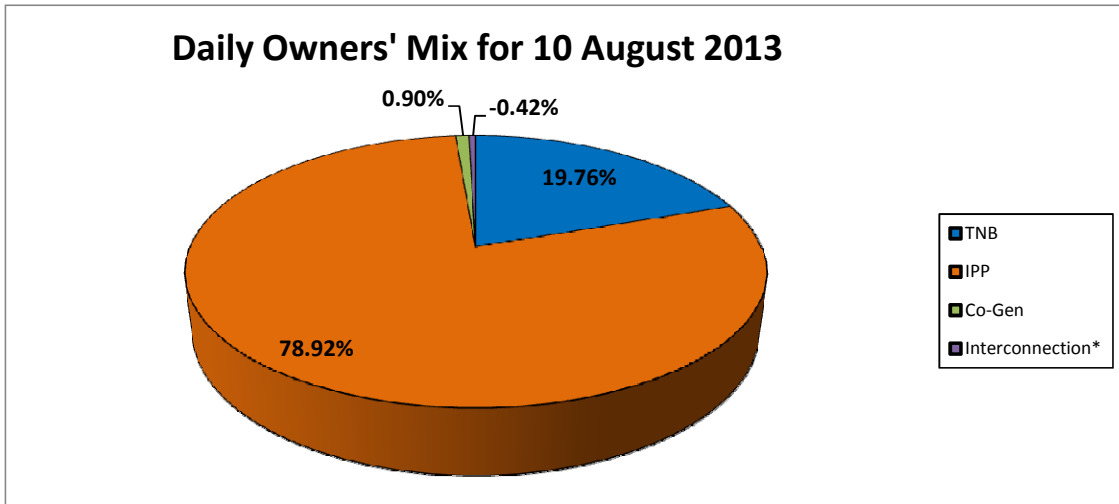
Electricity Supply & Market Regulations Dept.

Energy Commission Malaysia

11-Aug-13

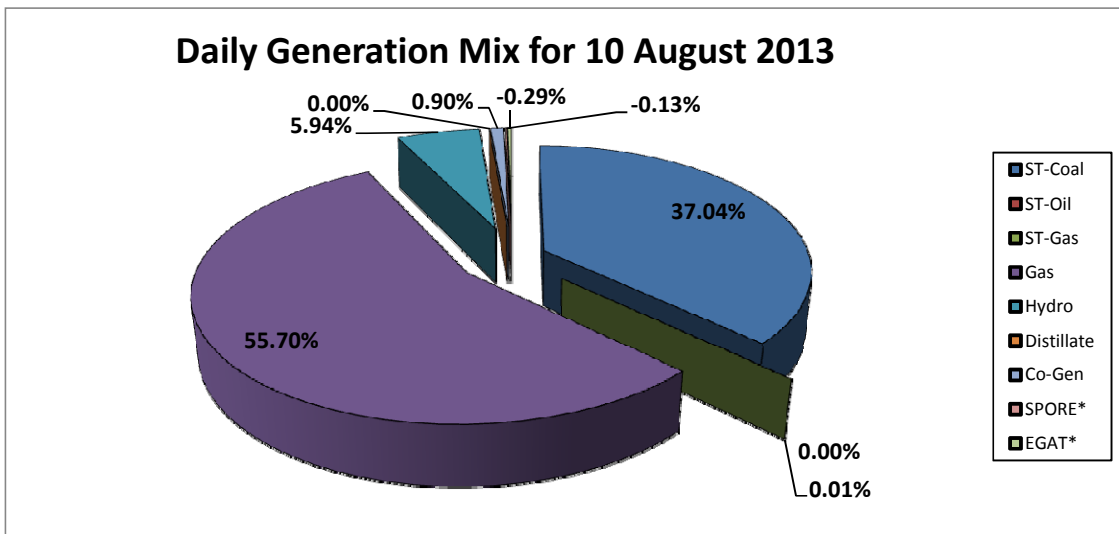
**Daily Owners' Mix for 10 August 2013**

TNB	46,292 MWh
IPP	184,897 MWh
Co-Gen	2,103 MWh
Interconnection*	(984) MWh



**Daily Generation Mix for 10 August 2013**

ST-Coal	86,766 MWh
ST-Oil	- MWh
ST-Gas	15 MWh
Gas	130,486 MWh
Hydro	13,922 MWh
Distillate	- MWh
Co-Gen	2,103 MWh
SPORE*	(293) MWh
EGAT*	(691) MWh



\*Negative = energy is imported from Singapore and Thailand  
 Positive = energy is exported to Singapore and Thailand