

## GRID SYSTEM OPERATION SUMMARY (PENINSULAR MALAYSIA)

	FORECAST	ACTUAL	VARIANCE
Maximum Demand for 8 August 2013	10,399 MW	10,438 MW	0.38%
Energy Demand for 8 August 2013	219.99 GWh	221.79 GWh	0.82%
Highest Maximum Demand (13 May 2013)	16,298 MW	16,562 MW	1.62% <b>*New MD</b>
Highest Daily Energy Demand (25 June 2013)	345.88 GWh	345.25 GWh	-0.18% <b>*New Energy</b>

Prepared by:

Electricity Market Operations

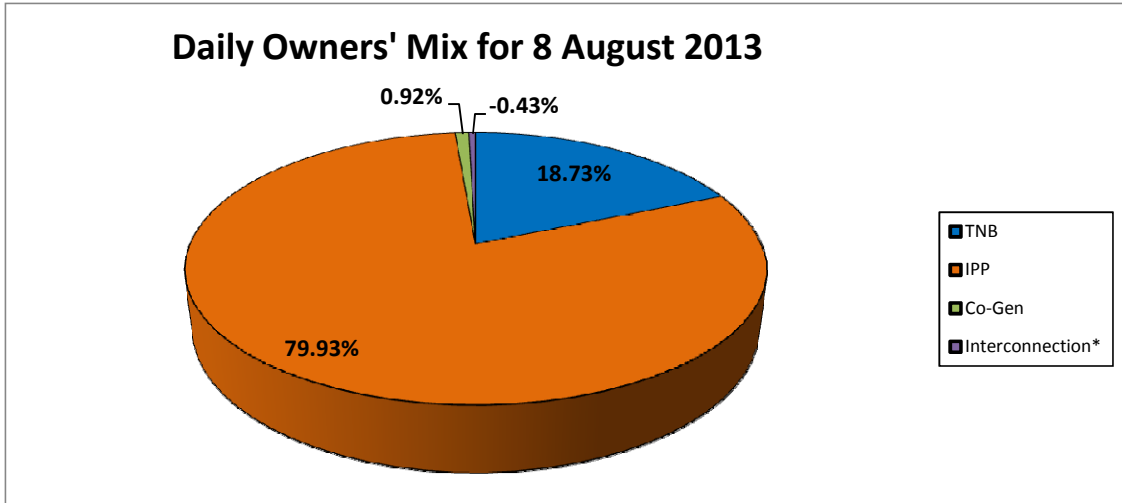
Electricity Supply & Market Regulations Dept.

Energy Commission Malaysia

09-Aug-13

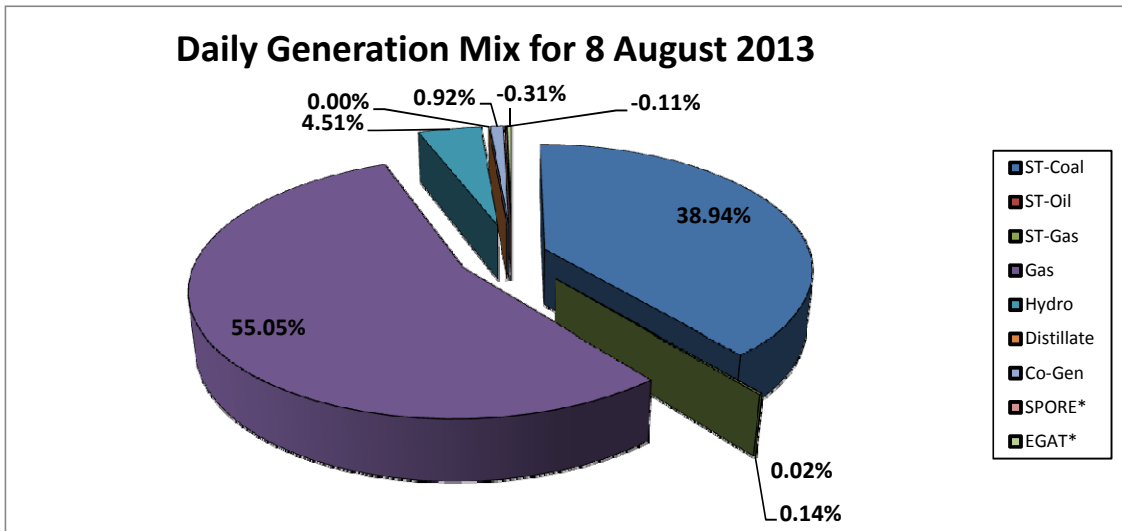
**Daily Owners' Mix for 8 August 2013**

TNB	41,531 MWh
IPP	177,268 MWh
Co-Gen	2,037 MWh
Interconnection*	(953) MWh



**Daily Generation Mix for 8 August 2013**

ST-Coal	86,359 MWh
ST-Oil	37 MWh
ST-Gas	306 MWh
Gas	122,089 MWh
Hydro	10,008 MWh
Distillate	- MWh
Co-Gen	2,037 MWh
SPORE*	(255) MWh
EGAT*	(698) MWh



\*Negative = energy is imported from Singapore and Thailand  
 Positive = energy is exported to Singapore and Thailand