

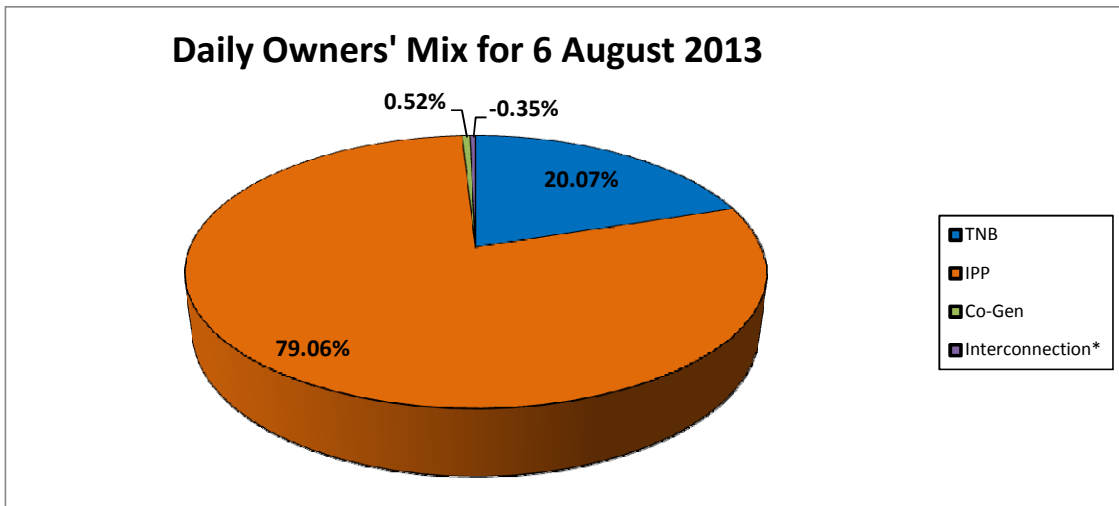
**GRID SYSTEM OPERATION SUMMARY (PENINSULAR MALAYSIA)**

	<b>FORECAST</b>	<b>ACTUAL</b>	<b>VARIANCE</b>	
<b>Maximum Demand for 6 August 2013</b>	14,425 MW	14,280 MW	-1.01%	
<b>Energy Demand for 6 August 2013</b>	307.57 GWh	306.30 GWh	-0.41%	
<b>Highest Maximum Demand (13 May 2013)</b>	16,298 MW	16,562 MW	1.62%	<b>*New MD</b>
<b>Highest Daily Energy Demand (25 June 2013)</b>	345.88 GWh	345.25 GWh	-0.18%	<b>*New Energy</b>

Prepared by:  
Electricity Market Operations  
Electricity Supply & Market Regulations Dept.  
Energy Commission Malaysia  
07-Aug-13

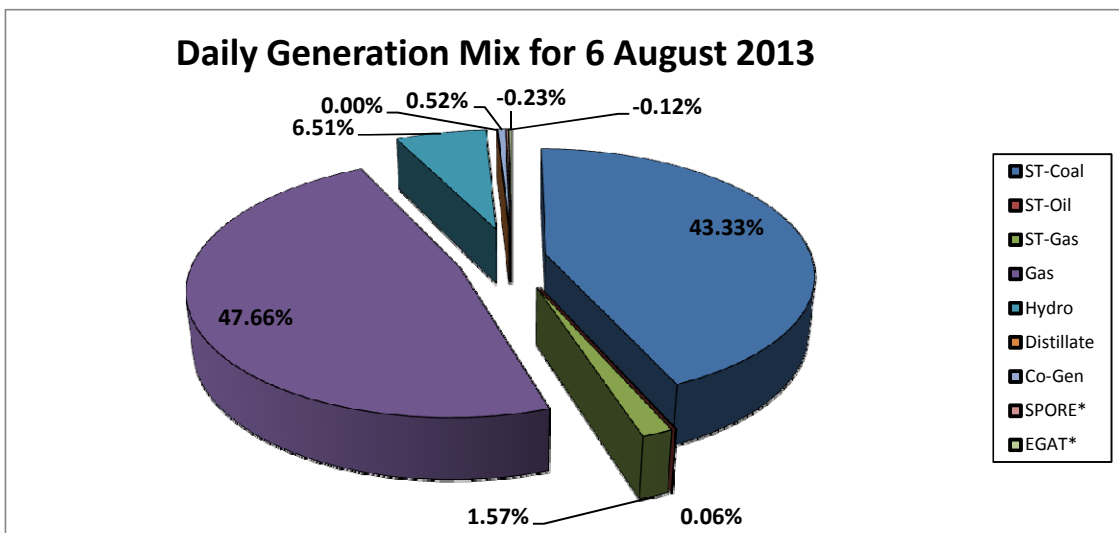
**Daily Owners' Mix for 6 August 2013**

TNB	61,470 MWh
IPP	242,149 MWh
Co-Gen	1,598 MWh
Interconnection*	(1,079) MWh



**Daily Generation Mix for 6 August 2013**

ST-Coal	132,724 MWh
ST-Oil	184 MWh
ST-Gas	4,797 MWh
Gas	145,982 MWh
Hydro	19,932 MWh
Distillate	- MWh
Co-Gen	1,598 MWh
SPORE*	(382) MWh
EGAT*	(697) MWh



\*Negative = energy is imported from Singapore and Thailand  
 Positive = energy is exported to Singapore and Thailand