

GRID SYSTEM OPERATION SUMMARY (PENINSULAR MALAYSIA)

	FORECAST	ACTUAL	VARIANCE	
Maximum Demand for 5 August 2013	15,104 MW	14,949 MW	-1.03%	
Energy Demand for 5 August 2013	318.43 GWh	313.90 GWh	-1.42%	
Highest Maximum Demand (13 May 2013)	16,298 MW	16,562 MW	1.62%	*New MD
Highest Daily Energy Demand (25 June 2013)	345.88 GWh	345.25 GWh	-0.18%	*New Energy

Prepared by:

Electricity Market Operations

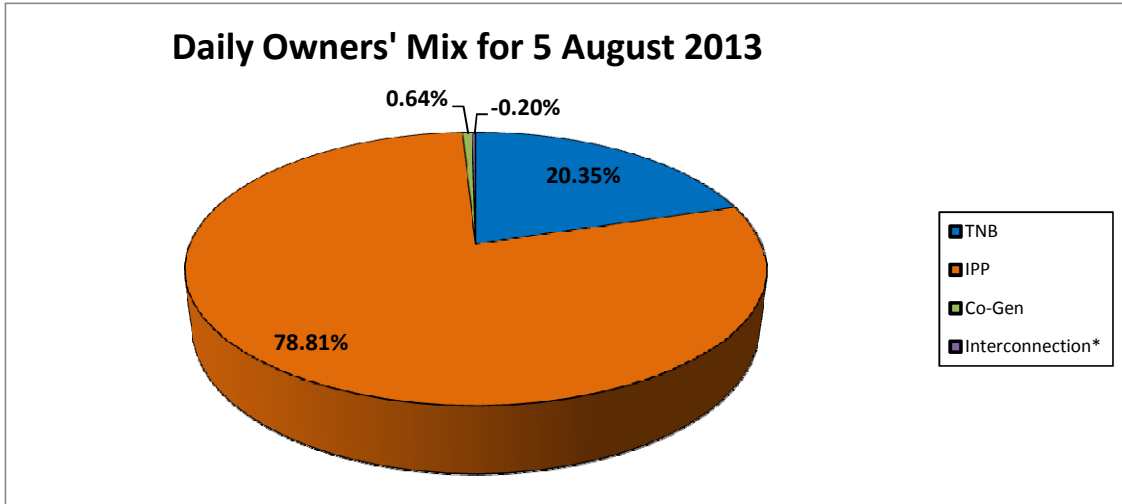
Electricity Supply & Market Regulations Dept.

Energy Commission Malaysia

06-Aug-13

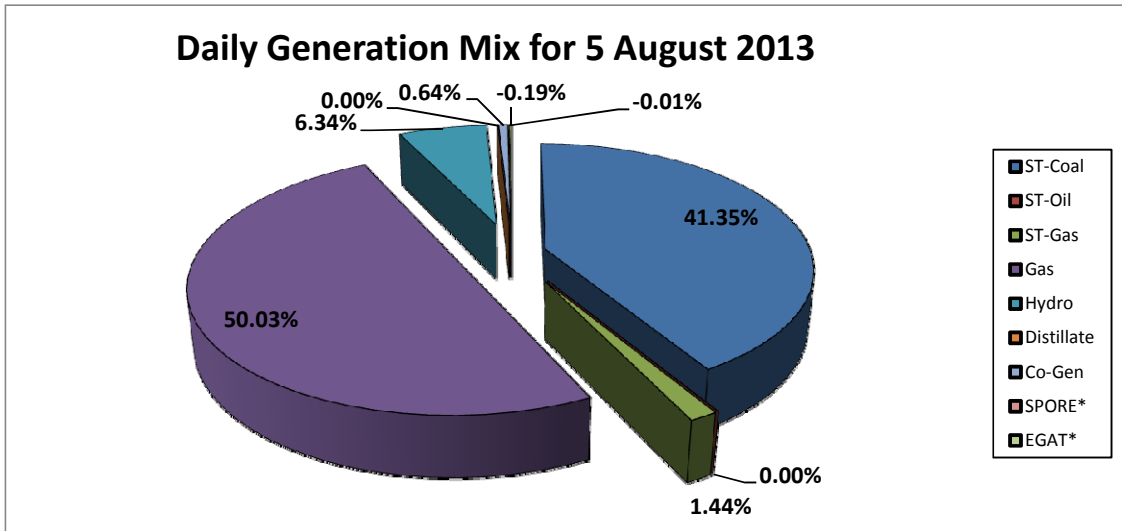
Daily Owners' Mix for 5 August 2013

TNB	63,871 MWh
IPP	247,383 MWh
Co-Gen	2,007 MWh
Interconnection*	(639) MWh



Daily Generation Mix for 5 August 2013

ST-Coal	129,787 MWh
ST-Oil	- MWh
ST-Gas	4,531 MWh
Gas	157,030 MWh
Hydro	19,906 MWh
Distillate	- MWh
Co-Gen	2,007 MWh
SPORE*	(32) MWh
EGAT*	(607) MWh



*Negative = energy is imported from Singapore and Thailand

Positive = energy is exported to Singapore and Thailand