

GRID SYSTEM OPERATION SUMMARY (PENINSULAR MALAYSIA)

	FORECAST	ACTUAL	VARIANCE	
Maximum Demand for 1 August 2013	15,602 MW	15,273 MW	-2.11%	
Energy Demand for 1 August 2013	327.48 GWh	323.98 GWh	-1.07%	
Highest Maximum Demand (13 May 2013)	16,298 MW	16,562 MW	1.62%	*New MD
Highest Daily Energy Demand (25 June 2013)	345.88 GWh	345.25 GWh	-0.18%	*New Energy

Prepared by:

Electricity Market Operations

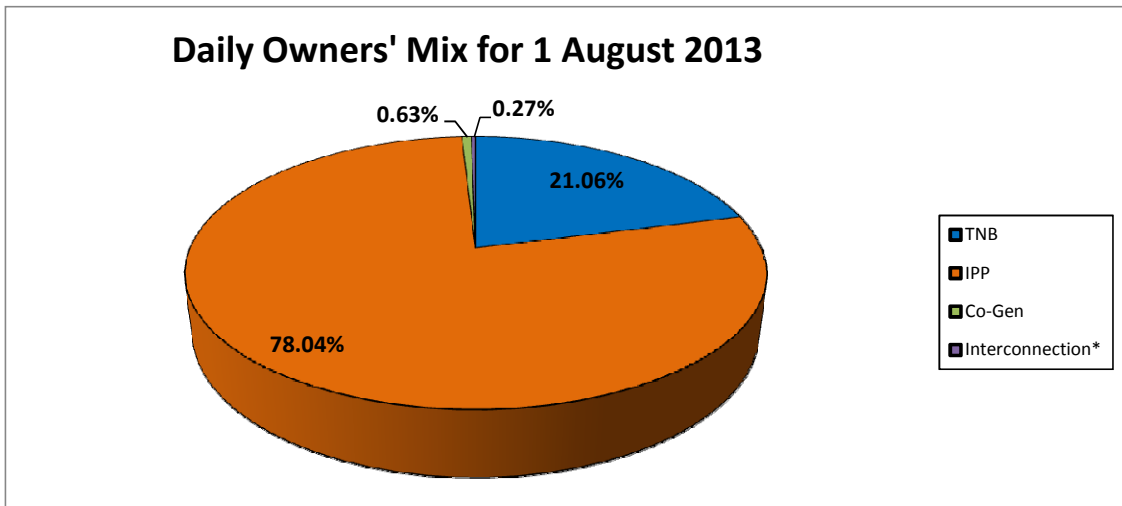
Electricity Supply & Market Regulations Dept.

Energy Commission Malaysia

02-Aug-13

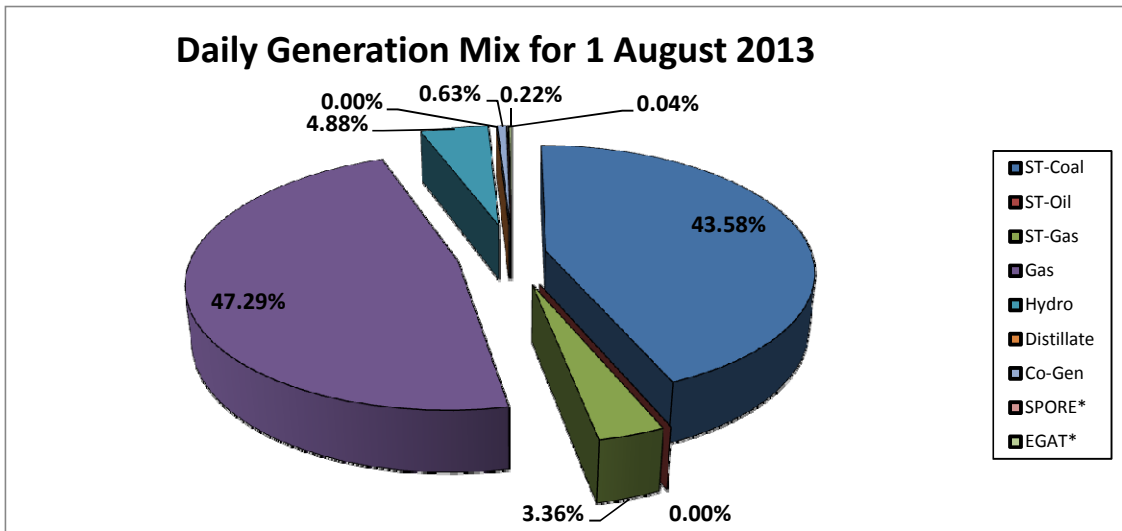
Daily Owners' Mix for 1 August 2013

TNB	68,604 MWh
IPP	254,177 MWh
Co-Gen	2,061 MWh
Interconnection*	864 MWh



Daily Generation Mix for 1 August 2013

ST-Coal	141,937 MWh
ST-Oil	- MWh
ST-Gas	10,945 MWh
Gas	154,012 MWh
Hydro	15,887 MWh
Distillate	- MWh
Co-Gen	2,061 MWh
SPORE*	143 MWh
EGAT*	721 MWh



*Negative = energy is imported from Singapore and Thailand
 Positive = energy is exported to Singapore and Thailand