

**GRID SYSTEM OPERATION SUMMARY (PENINSULAR MALAYSIA)**

	<b>FORECAST</b>	<b>ACTUAL</b>	<b>VARIANCE</b>	
<b>Maximum Demand for 25 May 2013</b>	13,993 MW	13,855 MW	-0.99%	
<b>Energy Demand for 25 May 2013</b>	303.90 GWh	298.76 GWh	-1.69%	
<b>Highest Maximum Demand (13 May 2013)</b>	16,298 MW	16,562 MW	1.62%	<b>*New MD</b>
<b>Highest Daily Energy Demand (14 May 2013)</b>	345.42 GWh	344.42 GWh	-0.29%	<b>*New Energy</b>

Prepared by:

Electricity Market Operations

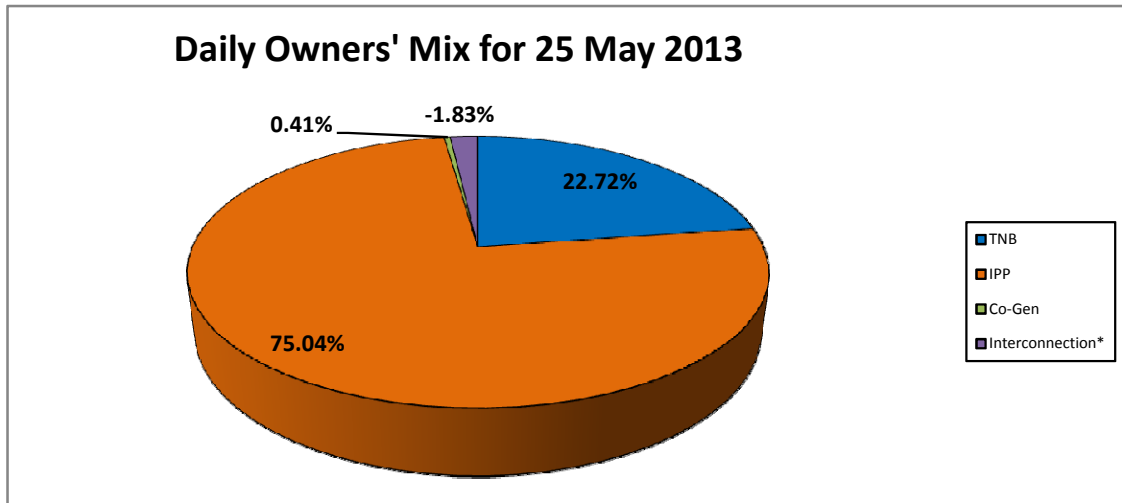
Electricity Supply & Market Regulations Dept.

Energy Commission Malaysia

26-May-13

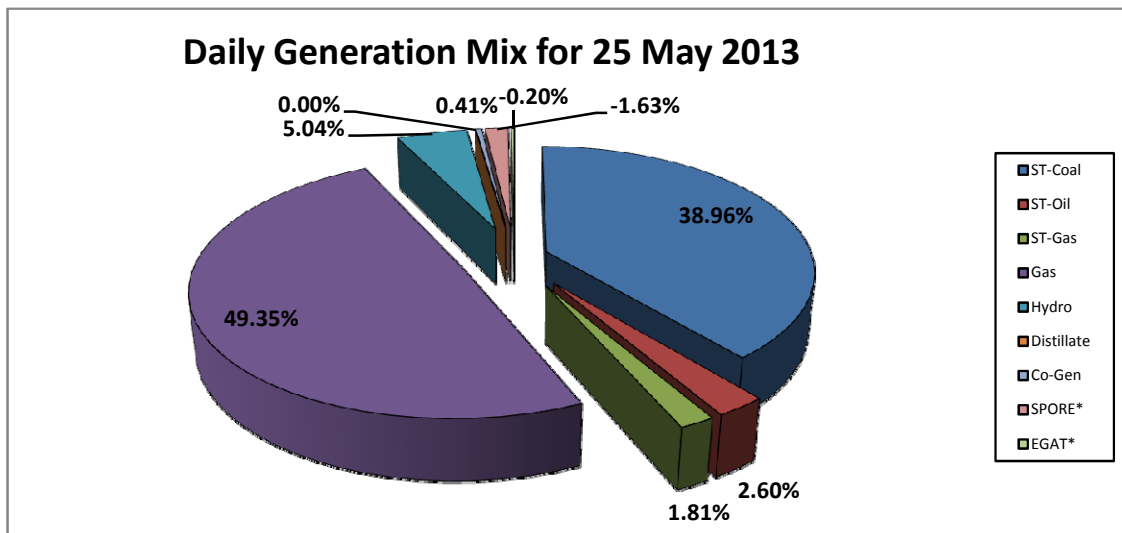
**Daily Owners' Mix for 25 May 2013**

TNB	67,874 MWh
IPP	224,199 MWh
Co-Gen	1,210 MWh
Interconnection*	(5,473) MWh



**Daily Generation Mix for 25 May 2013**

ST-Coal	116,397 MWh
ST-Oil	7,771 MWh
ST-Gas	5,414 MWh
Gas	147,441 MWh
Hydro	15,050 MWh
Distillate	- MWh
Co-Gen	1,210 MWh
SPORE*	(4,862) MWh
EGAT*	(611) MWh



\*Negative = energy is imported from Singapore and Thailand  
 Positive = energy is exported to Singapore and Thailand