

GRID SYSTEM OPERATION SUMMARY (PENINSULAR MALAYSIA)

	FORECAST	ACTUAL	VARIANCE	
Maximum Demand for 7 May 2013	15,492 MW	15,657 MW	1.07%	
Energy Demand for 7 May 2013	317.95 GWh	318.18 GWh	0.07%	
Highest Maximum Demand (16 April 2013)	16,095 MW	16,356 MW	1.62%	*New MD
Highest Daily Energy Demand (16 April 2013)	336.92 GWh	338.80 GWh	0.56%	*New Energy

Prepared by:

Electricity Market Operations

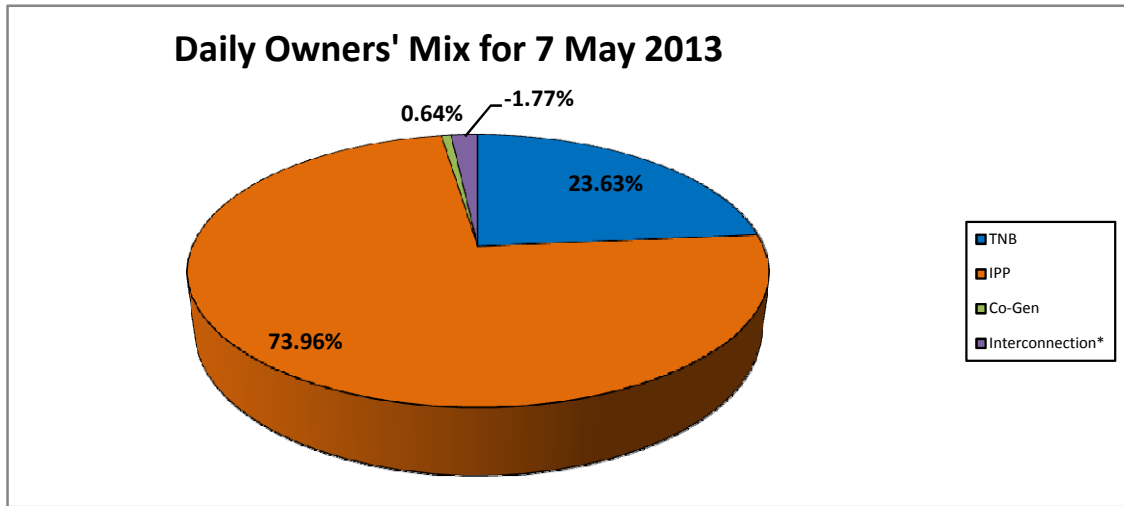
Electricity Supply & Market Regulations Dept.

Energy Commission Malaysia

08-May-13

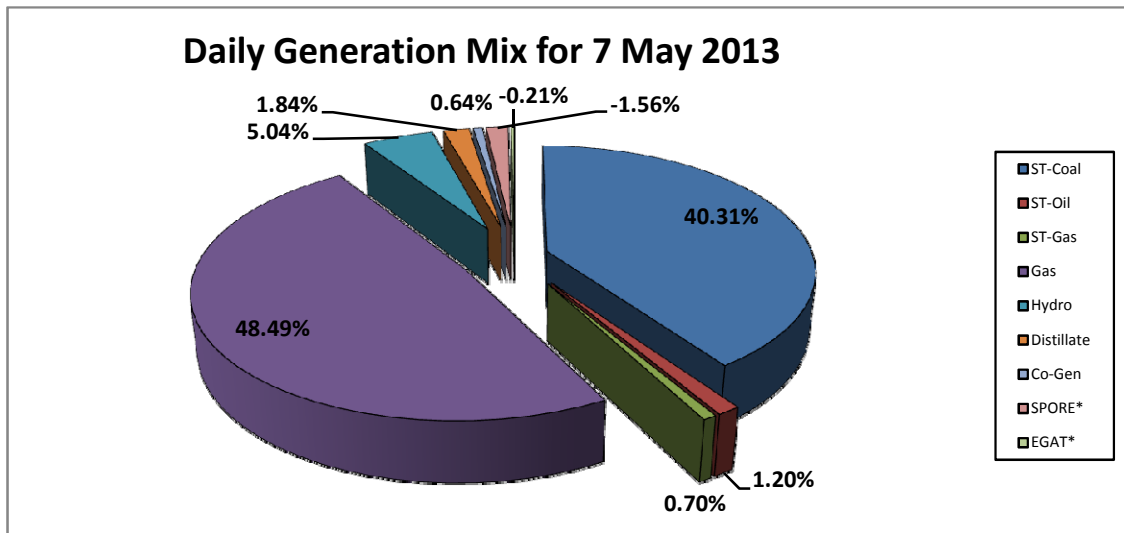
Daily Owners' Mix for 7 May 2013

TNB	75,186 MWh
IPP	235,309 MWh
Co-Gen	2,041 MWh
Interconnection*	(5,641) MWh



Daily Generation Mix for 7 May 2013

ST-Coal	128,271 MWh
ST-Oil	3,825 MWh
ST-Gas	2,240 MWh
Gas	154,284 MWh
Hydro	16,024 MWh
Distillate	5,851 MWh
Co-Gen	2,041 MWh
SPORE*	(4,962) MWh
EGAT*	(679) MWh



*Negative = energy is imported from Singapore and Thailand
 Positive = energy is exported to Singapore and Thailand