

GRID SYSTEM OPERATION SUMMARY (PENINSULAR MALAYSIA)

	FORECAST	ACTUAL	VARIANCE	
Maximum Demand for 3 May 2013	15,149 MW	15,180 MW	0.20%	
Energy Demand for 3 May 2013	319.02 GWh	317.97 GWh	-0.33%	
Highest Maximum Demand (16 April 2013)	16,095 MW	16,356 MW	1.62%	*New MD
Highest Daily Energy Demand (16 April 2013)	336.92 GWh	338.80 GWh	0.56%	*New Energy

Prepared by:

Electricity Market Operations

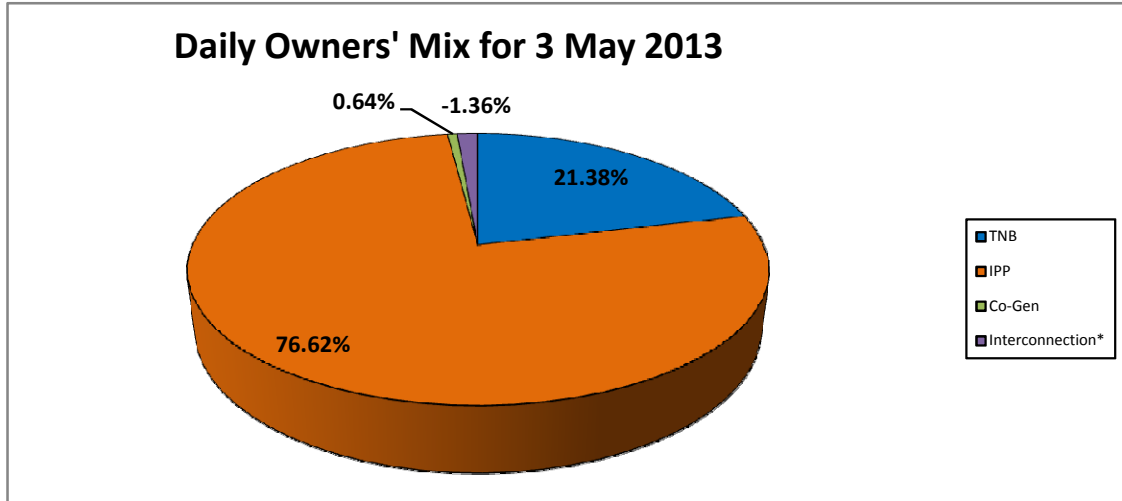
Electricity Supply & Market Regulations Dept.

Energy Commission Malaysia

04-May-13

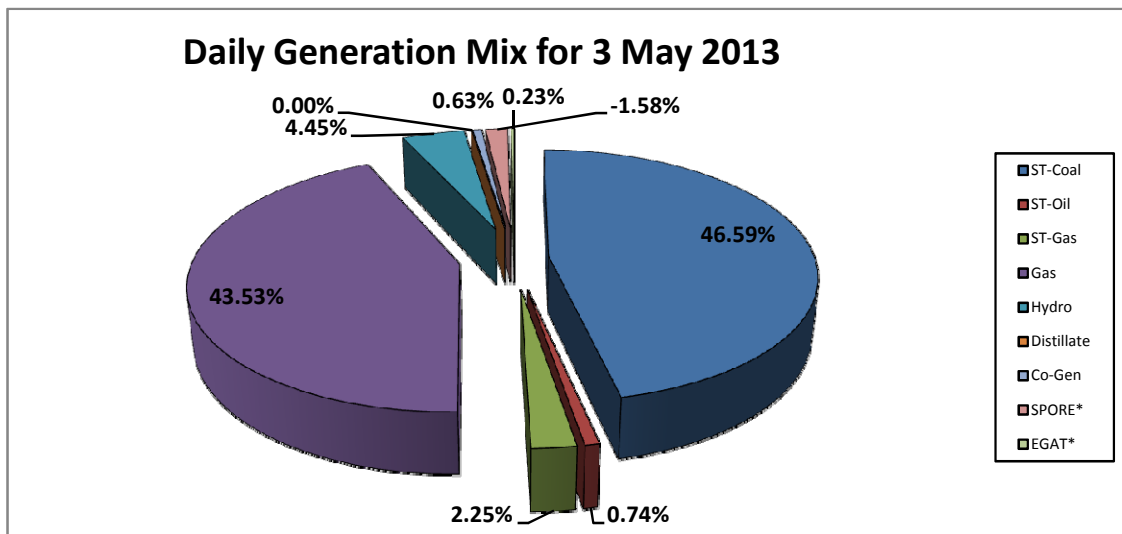
Daily Owners' Mix for 3 May 2013

TNB	68,033 MWh
IPP	243,808 MWh
Co-Gen	2,027 MWh
Interconnection*	(4,341) MWh



Daily Generation Mix for 3 May 2013

ST-Coal	148,918 MWh
ST-Oil	2,360 MWh
ST-Gas	7,197 MWh
Gas	139,133 MWh
Hydro	14,233 MWh
Distillate	- MWh
Co-Gen	2,027 MWh
SPORE*	(5,062) MWh
EGAT*	721 MWh



*Negative = energy is imported from Singapore and Thailand
 Positive = energy is exported to Singapore and Thailand