

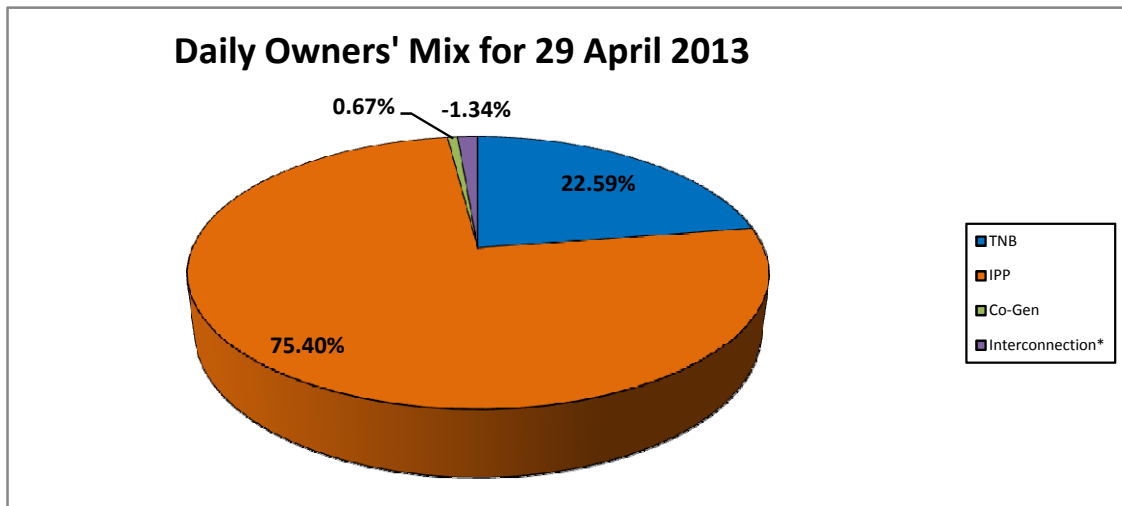
GRID SYSTEM OPERATION SUMMARY (PENINSULAR MALAYSIA)

	FORECAST	ACTUAL	VARIANCE	
Maximum Demand for 29 April 2013	15,881 MW	15,900 MW	0.12%	
Energy Demand for 29 April 2013	322.01 GWh	321.09 GWh	-0.29%	
Highest Maximum Demand (16 April 2013)	16,095 MW	16,356 MW	1.62%	*New MD
Highest Daily Energy Demand (16 April 2013)	336.92 GWh	338.80 GWh	0.56%	*New Energy

Prepared by:
Electricity Market Operations
Electricity Supply & Market Regulations Dept.
Energy Commission Malaysia
30-Apr-13

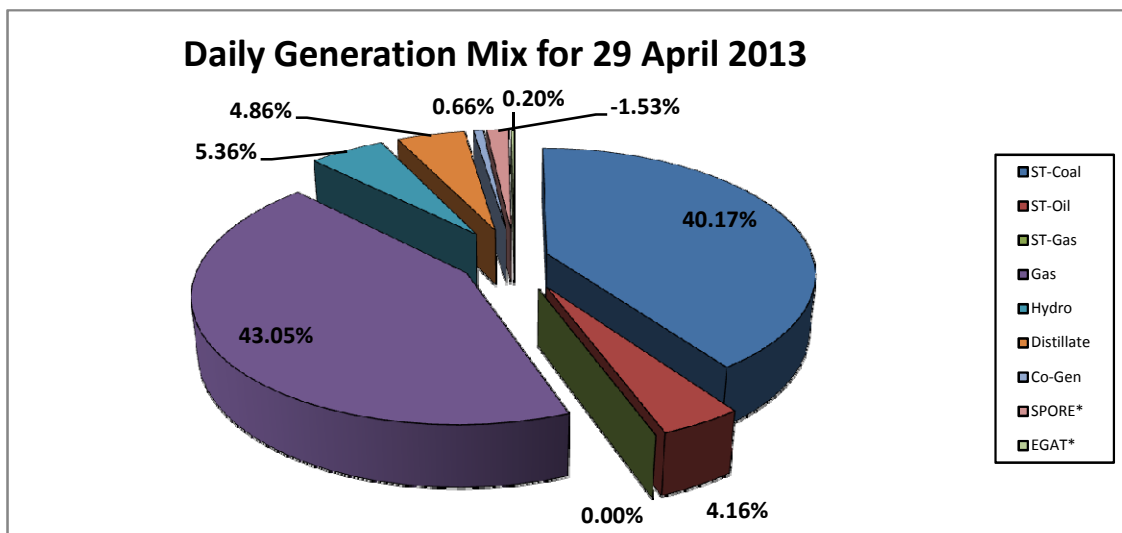
Daily Owners' Mix for 29 April 2013

TNB	72,533 MWh
IPP	242,118 MWh
Co-Gen	2,140 MWh
Interconnection*	(4,300) MWh



Daily Generation Mix for 29 April 2013

ST-Coal	129,500 MWh
ST-Oil	13,416 MWh
ST-Gas	- MWh
Gas	138,778 MWh
Hydro	17,292 MWh
Distillate	15,665 MWh
Co-Gen	2,140 MWh
SPORE*	(4,938) MWh
EGAT*	638 MWh



*Negative = energy is imported from Singapore and Thailand
 Positive = energy is exported to Singapore and Thailand