

GRID SYSTEM OPERATION SUMMARY (PENINSULAR MALAYSIA)

	FORECAST	ACTUAL	VARIANCE	
Maximum Demand for 10 January 2013	15,130 MW	15,200 MW	0.46%	
Energy Demand for 10 January 2013	316.71 GWh	316.35 GWh	-0.11%	
Highest Maximum Demand (20 June 2012)	15,685 MW	15,826 MW	0.90%	*New MD
Highest Daily Energy Demand (20 June 2012)	326.75 GWh	328.72 GWh	0.60%	*New Energy

Prepared by:

Electricity Market Operations

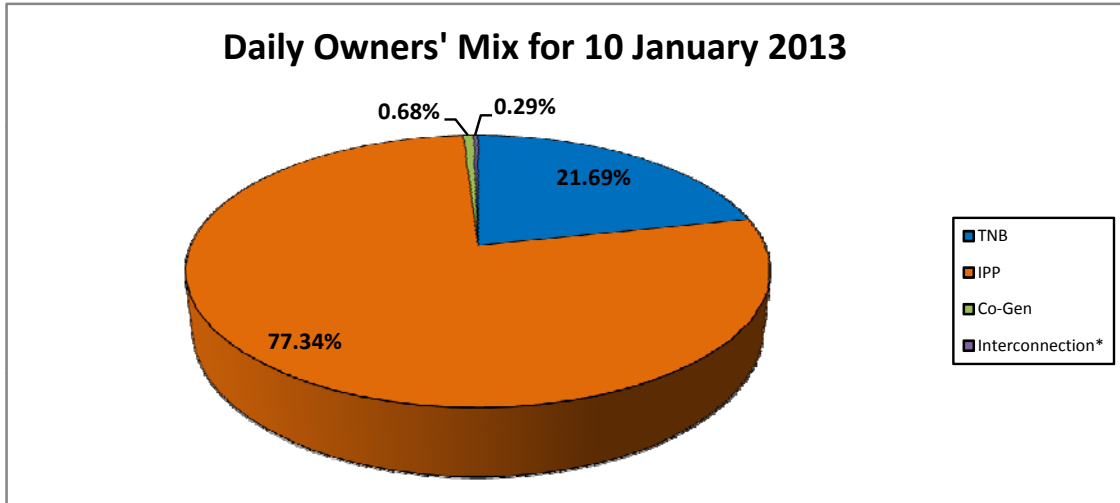
Electricity Supply & Market Regulations Dept.

Energy Commission Malaysia

11-Jan-13

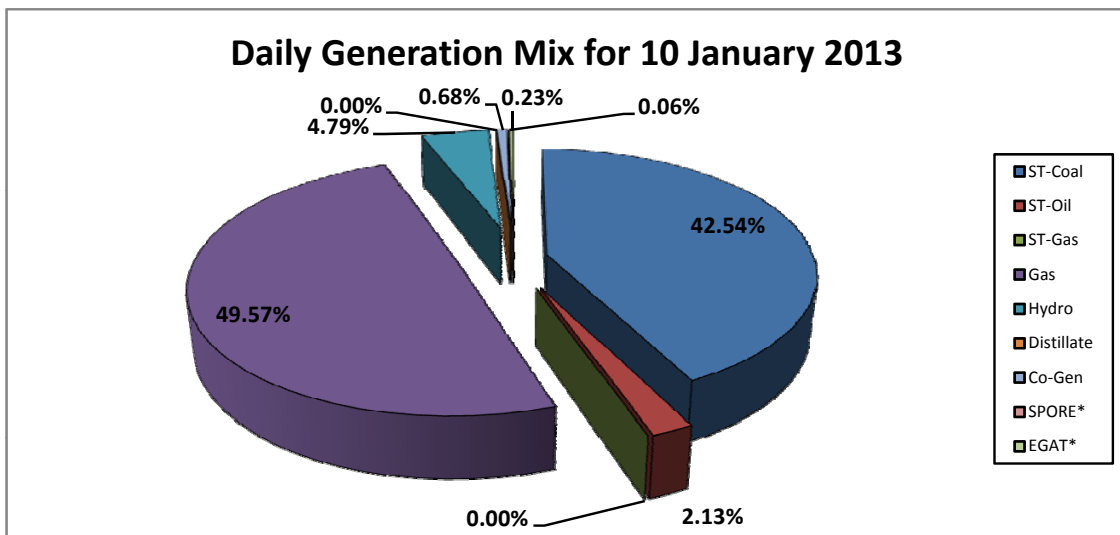
Daily Owners' Mix for 10 January 2013

TNB	69,021 MWh
IPP	246,065 MWh
Co-Gen	2,178 MWh
Interconnection*	911 MWh



Daily Generation Mix for 10 January 2013

ST-Coal	135,361 MWh
ST-Oil	6,771 MWh
ST-Gas	- MWh
Gas	157,712 MWh
Hydro	15,242 MWh
Distillate	- MWh
Co-Gen	2,178 MWh
SPORE*	193 MWh
EGAT*	718 MWh



*Negative = energy is imported from Singapore and Thailand
 Positive = energy is exported to Singapore and Thailand