

GRID SYSTEM OPERATION SUMMARY (PENINSULAR MALAYSIA)

	FORECAST	ACTUAL	VARIANCE	
Maximum Demand for 24 December 2012	14,075 MW	13,643 MW	-3.07%	
Energy Demand for 24 December 2012	292.66 GWh	284.30 GWh	-2.86%	
Highest Maximum Demand (20 June 2012)	15,685 MW	15,826 MW	0.90%	*New MD
Highest Daily Energy Demand (20 June 2012)	326.75 GWh	328.72 GWh	0.60%	*New Energy

Prepared by:

Electricity Market Operations

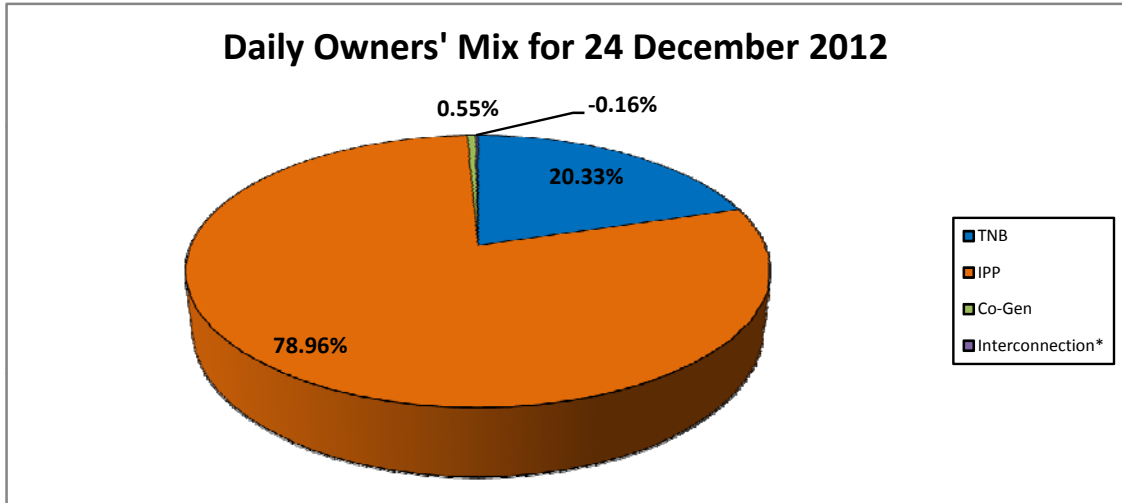
Electricity Supply & Market Regulations Dept.

Energy Commission Malaysia

25-Dec-12

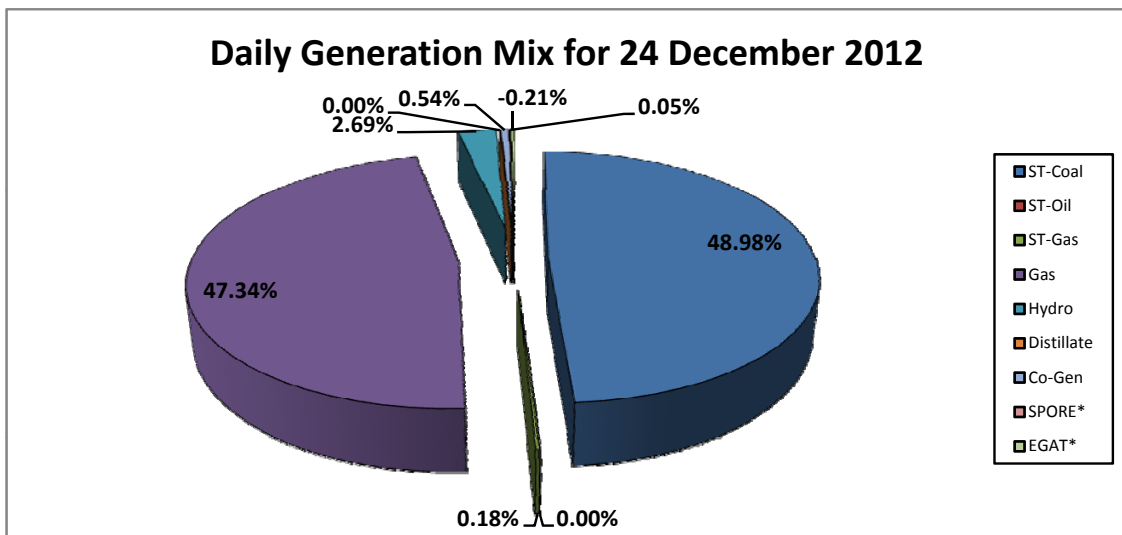
Daily Owners' Mix for 24 December 2012

TNB	57,805 MWh
IPP	224,479 MWh
Co-Gen	1,551 MWh
Interconnection*	(463) MWh



Daily Generation Mix for 24 December 2012

ST-Coal	139,389 MWh
ST-Oil	- MWh
ST-Gas	522 MWh
Gas	134,721 MWh
Hydro	7,652 MWh
Distillate	- MWh
Co-Gen	1,551 MWh
SPORE*	145 MWh
EGAT*	(608) MWh



*Negative = energy is imported from Singapore and Thailand
 Positive = energy is exported to Singapore and Thailand