

GRID SYSTEM OPERATION SUMMARY (PENINSULAR MALAYSIA)

	FORECAST	ACTUAL	VARIANCE	
Maximum Demand for 11 December 2012	13,544 MW	13,619 MW	0.55%	
Energy Demand for 11 December 2012	290.77 GWh	292.57 GWh	0.62%	
Highest Maximum Demand (20 June 2012)	15,685 MW	15,826 MW	0.90%	*New MD
Highest Daily Energy Demand (20 June 2012)	326.75 GWh	328.72 GWh	0.60%	*New Energy

Prepared by:

Electricity Market Operations

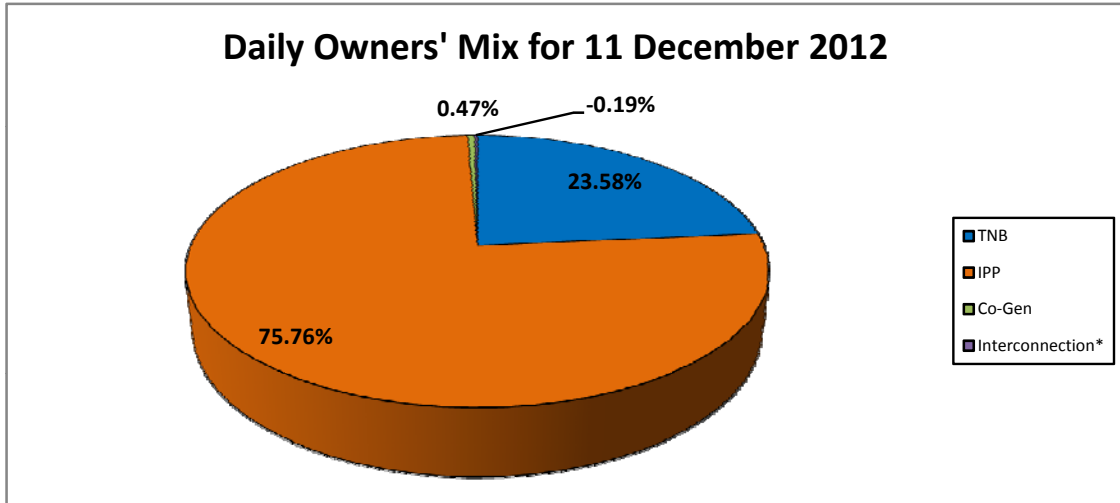
Electricity Supply & Market Regulations Dept.

Energy Commission Malaysia

12-Dec-12

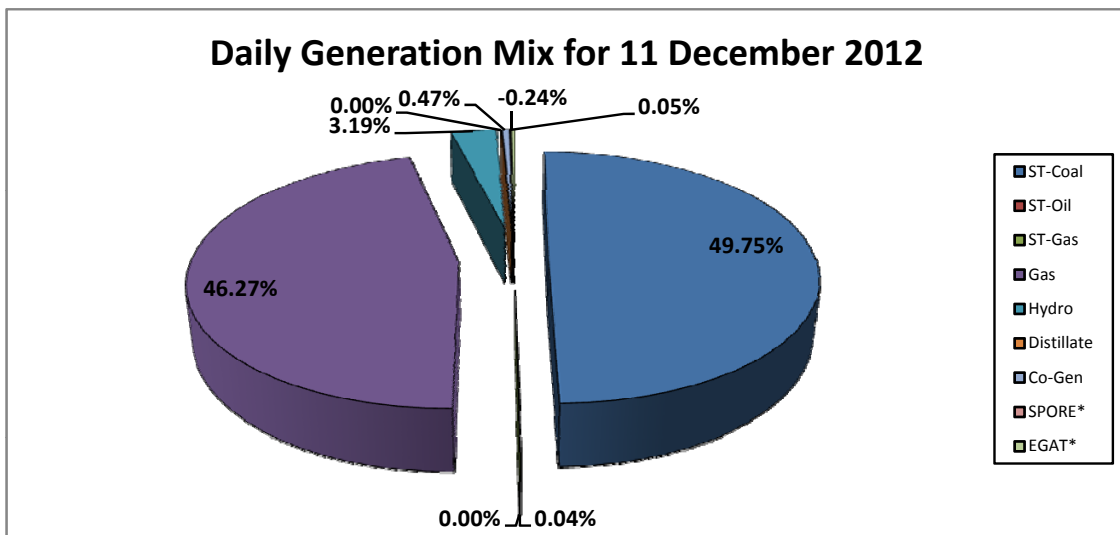
Daily Owners' Mix for 11 December 2012

TNB	68,997 MWh
IPP	221,656 MWh
Co-Gen	1,363 MWh
Interconnection*	(557) MWh



Daily Generation Mix for 11 December 2012

ST-Coal	145,690 MWh
ST-Oil	128 MWh
ST-Gas	- MWh
Gas	135,499 MWh
Hydro	9,336 MWh
Distillate	- MWh
Co-Gen	1,363 MWh
SPORE*	144 MWh
EGAT*	(701) MWh



*Negative = energy is imported from Singapore and Thailand
 Positive = energy is exported to Singapore and Thailand