

**GRID SYSTEM OPERATION SUMMARY (PENINSULAR MALAYSIA)**

	<b>FORECAST</b>	<b>ACTUAL</b>	<b>VARIANCE</b>	
<b>Maximum Demand for 1 December 2012</b>	13,071 MW	13,007 MW	-0.49%	
<b>Energy Demand for 1 December 2012</b>	286.53 GWh	282.16 GWh	-1.53%	
<b>Highest Maximum Demand (20 June 2012)</b>	15,685 MW	15,826 MW	0.90%	<b>*New MD</b>
<b>Highest Daily Energy Demand (20 June 2012)</b>	326.75 GWh	328.72 GWh	0.60%	<b>*New Energy</b>

Prepared by:

Electricity Market Operations

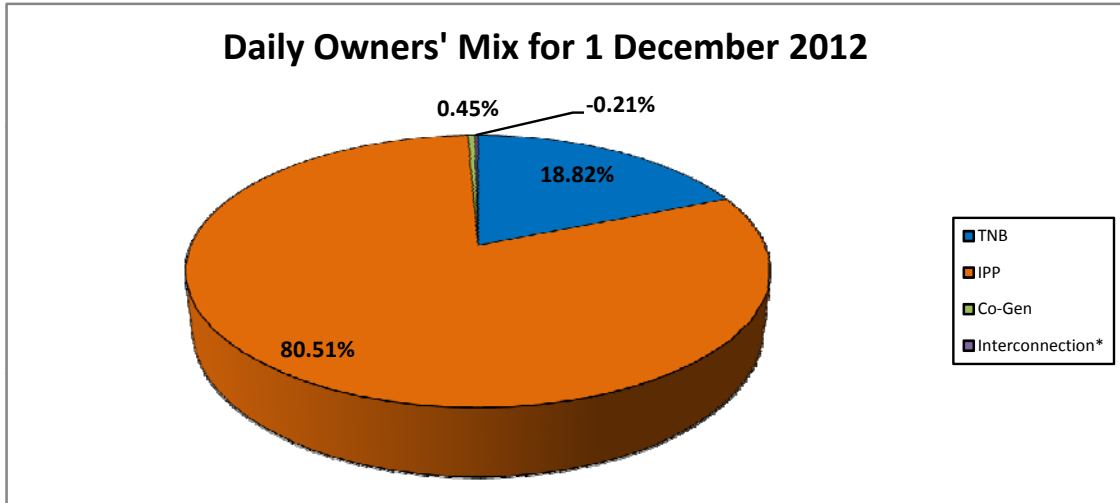
Electricity Supply & Market Regulations Dept.

Energy Commission Malaysia

02-Dec-12

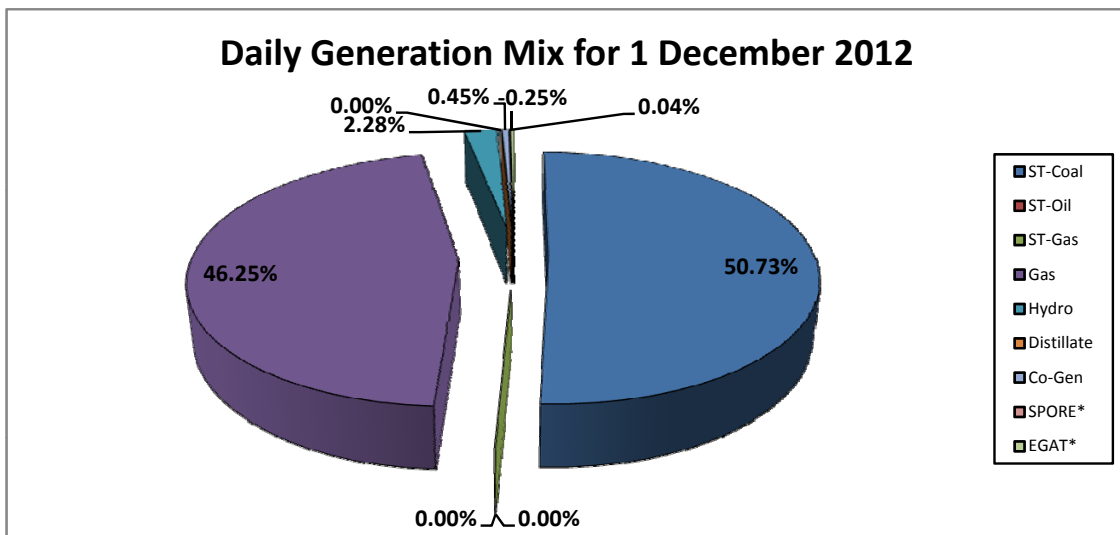
**Daily Owners' Mix for 1 December 2012**

<b>TNB</b>	53,103 MWh
<b>IPP</b>	227,178 MWh
<b>Co-Gen</b>	1,283 MWh
<b>Interconnection*</b>	(595) MWh



**Daily Generation Mix for 1 December 2012**

<b>ST-Coal</b>	143,243 MWh
<b>ST-Oil</b>	- MWh
<b>ST-Gas</b>	- MWh
<b>Gas</b>	130,597 MWh
<b>Hydro</b>	6,441 MWh
<b>Distillate</b>	- MWh
<b>Co-Gen</b>	1,283 MWh
<b>SPORE*</b>	103 MWh
<b>EGAT*</b>	(698) MWh



\*Negative = energy is imported from Singapore and Thailand  
 Positive = energy is exported to Singapore and Thailand