

GRID SYSTEM OPERATION SUMMARY (PENINSULAR MALAYSIA)

| | FORECAST | ACTUAL | VARIANCE | |
|---|-----------------|---------------|-----------------|--------------------|
| Maximum Demand for 17 November 2012 | 13,082 MW | 13,260 MW | 1.36% | |
| Energy Demand for 17 November 2012 | 282.97 GWh | 288.93 GWh | 2.11% | |
| Highest Maximum Demand (20 June 2012) | 15,685 MW | 15,826 MW | 0.90% | *New MD |
| Highest Daily Energy Demand (20 June 2012) | 326.75 GWh | 328.72 GWh | 0.60% | *New Energy |

Prepared by:

Electricity Market Operations

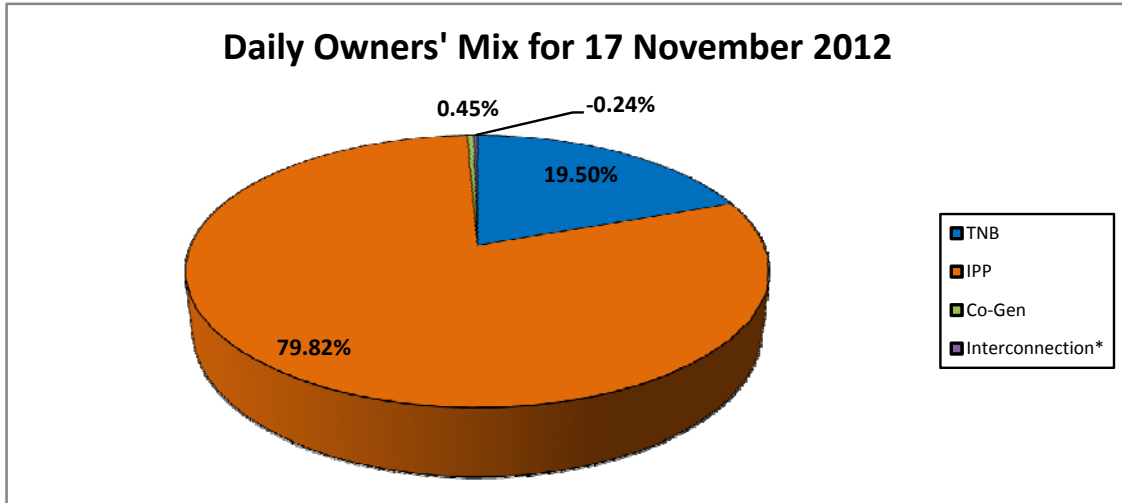
Electricity Supply & Market Regulations Dept.

Energy Commission Malaysia

18-Nov-12

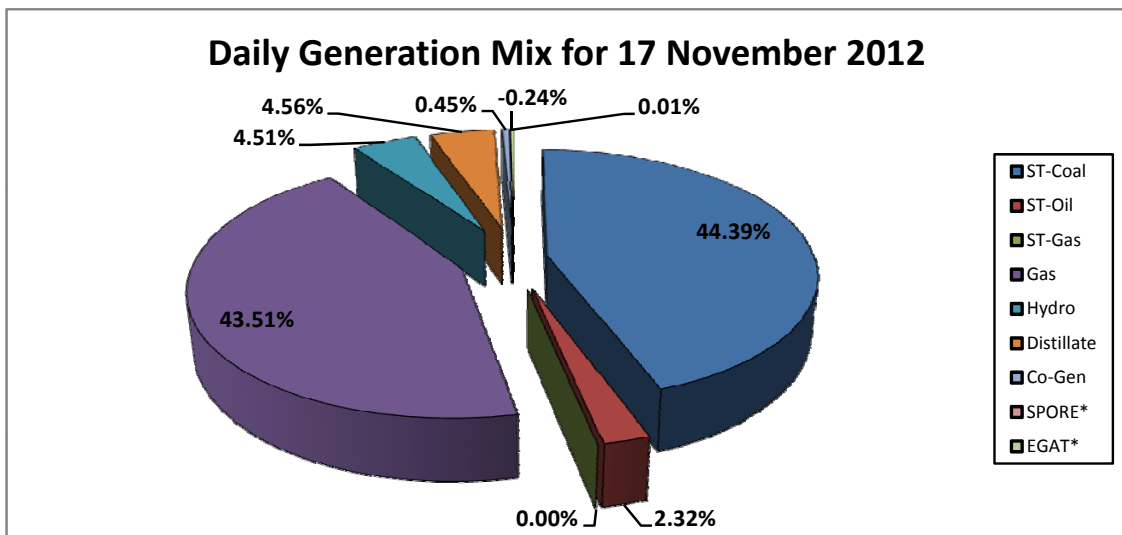
Daily Owners' Mix for 17 November 2012

| | |
|------------------|-------------|
| TNB | 56,329 MWh |
| IPP | 230,619 MWh |
| Co-Gen | 1,293 MWh |
| Interconnection* | (684) MWh |



Daily Generation Mix for 17 November 2012

| | |
|------------|-------------|
| ST-Coal | 128,273 MWh |
| ST-Oil | 6,712 MWh |
| ST-Gas | - MWh |
| Gas | 125,737 MWh |
| Hydro | 13,036 MWh |
| Distillate | 13,190 MWh |
| Co-Gen | 1,293 MWh |
| SPORE* | 16 MWh |
| EGAT* | (700) MWh |



*Negative = energy is imported from Singapore and Thailand
 Positive = energy is exported to Singapore and Thailand