

GRID SYSTEM OPERATION SUMMARY (PENINSULAR MALAYSIA)

	FORECAST	ACTUAL	VARIANCE	
Maximum Demand for 16 November 2012	14,443 MW	14,899 MW	3.16%	
Energy Demand for 16 November 2012	299.84 GWh	306.89 GWh	2.35%	
Highest Maximum Demand (20 June 2012)	15,685 MW	15,826 MW	0.90%	*New MD
Highest Daily Energy Demand (20 June 2012)	326.75 GWh	328.72 GWh	0.60%	*New Energy

Prepared by:

Electricity Market Operations

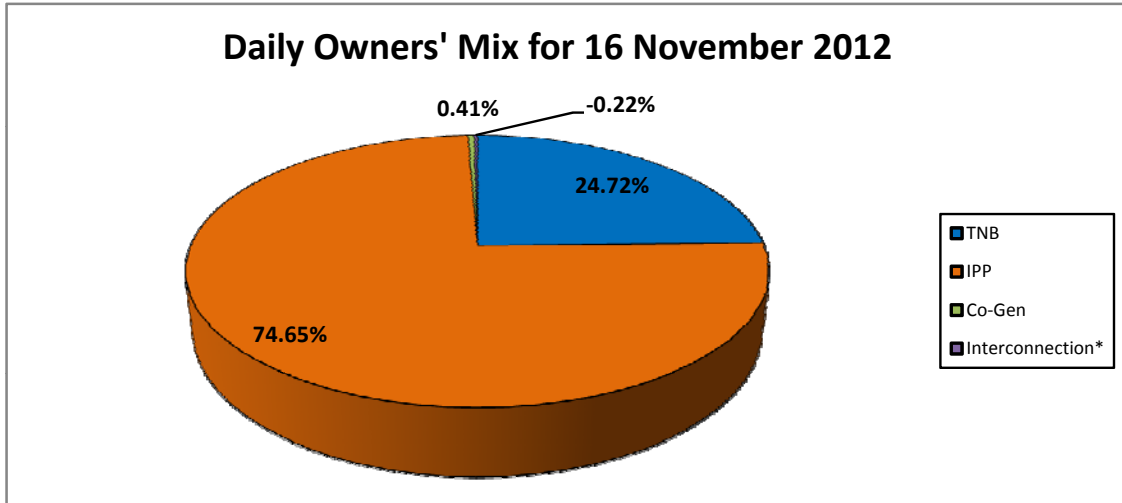
Electricity Supply & Market Regulations Dept.

Energy Commission Malaysia

17-Nov-12

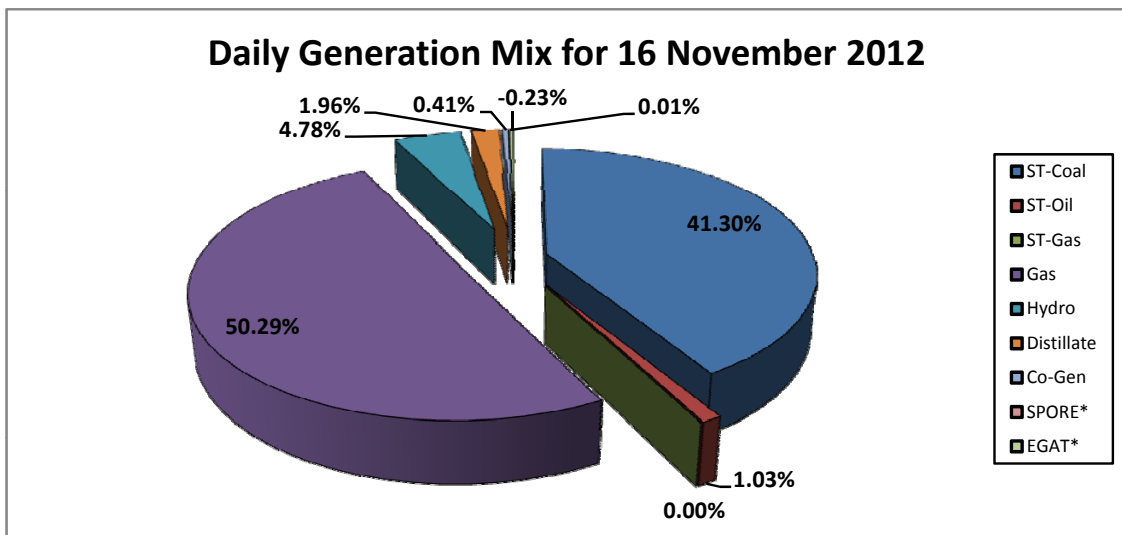
Daily Owners' Mix for 16 November 2012

TNB	75,849 MWh
IPP	229,100 MWh
Co-Gen	1,270 MWh
Interconnection*	(673) MWh



Daily Generation Mix for 16 November 2012

ST-Coal	126,764 MWh
ST-Oil	3,159 MWh
ST-Gas	- MWh
Gas	154,355 MWh
Hydro	14,658 MWh
Distillate	6,013 MWh
Co-Gen	1,270 MWh
SPORE*	23 MWh
EGAT*	(696) MWh



*Negative = energy is imported from Singapore and Thailand
 Positive = energy is exported to Singapore and Thailand