

GRID SYSTEM OPERATION SUMMARY (PENINSULAR MALAYSIA)

	FORECAST	ACTUAL	VARIANCE	
Maximum Demand for 14 November 2012	14,454 MW	14,479 MW	0.17%	
Energy Demand for 14 November 2012	292.39 GWh	291.76 GWh	-0.22%	
Highest Maximum Demand (20 June 2012)	15,685 MW	15,826 MW	0.90%	*New MD
Highest Daily Energy Demand (20 June 2012)	326.75 GWh	328.72 GWh	0.60%	*New Energy

Prepared by:

Electricity Market Operations

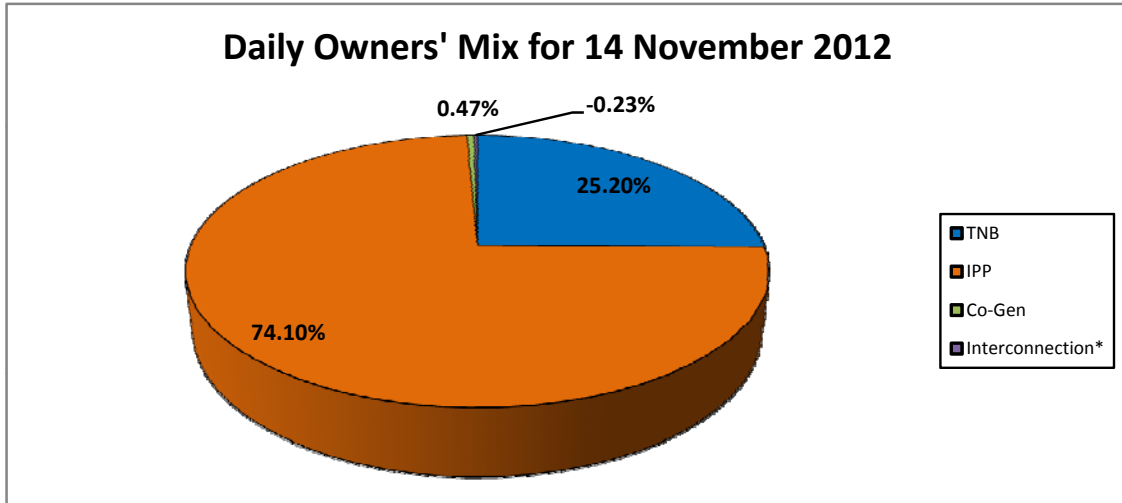
Electricity Supply & Market Regulations Dept.

Energy Commission Malaysia

15-Nov-12

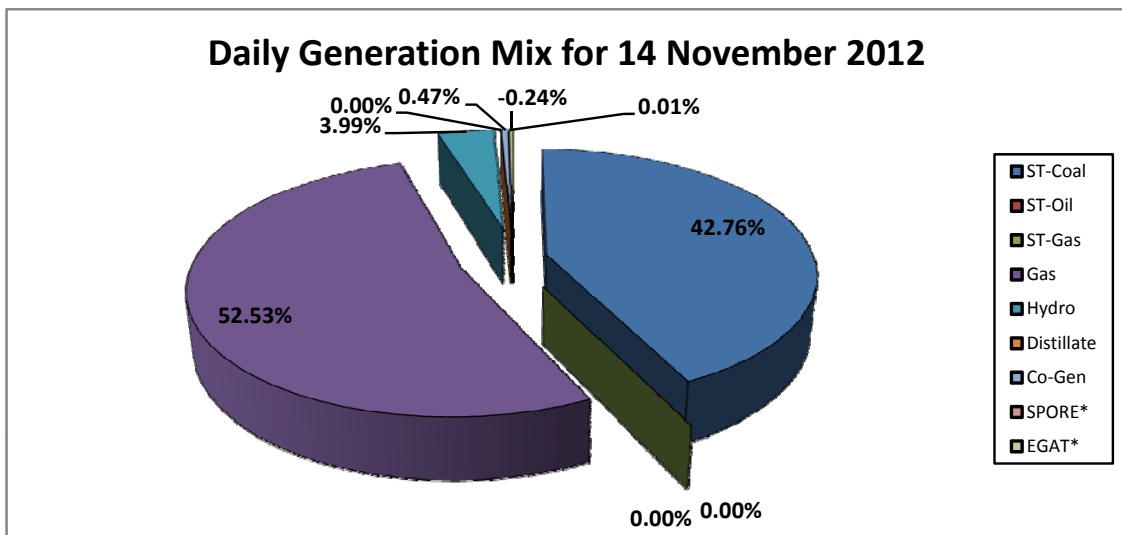
Daily Owners' Mix for 14 November 2012

TNB	73,519 MWh
IPP	216,208 MWh
Co-Gen	1,368 MWh
Interconnection*	(673) MWh



Daily Generation Mix for 14 November 2012

ST-Coal	124,783 MWh
ST-Oil	- MWh
ST-Gas	- MWh
Gas	153,302 MWh
Hydro	11,642 MWh
Distillate	- MWh
Co-Gen	1,368 MWh
SPORE*	23 MWh
EGAT*	(696) MWh



*Negative = energy is imported from Singapore and Thailand
 Positive = energy is exported to Singapore and Thailand