

GRID SYSTEM OPERATION SUMMARY (PENINSULAR MALAYSIA)

	FORECAST	ACTUAL	VARIANCE	
Maximum Demand for 13 November 2012	11,737 MW	12,167 MW	3.66%	
Energy Demand for 13 November 2012	254.35 GWh	254.83 GWh	0.19%	
Highest Maximum Demand (20 June 2012)	15,685 MW	15,826 MW	0.90%	*New MD
Highest Daily Energy Demand (20 June 2012)	326.75 GWh	328.72 GWh	0.60%	*New Energy

Prepared by:

Electricity Market Operations

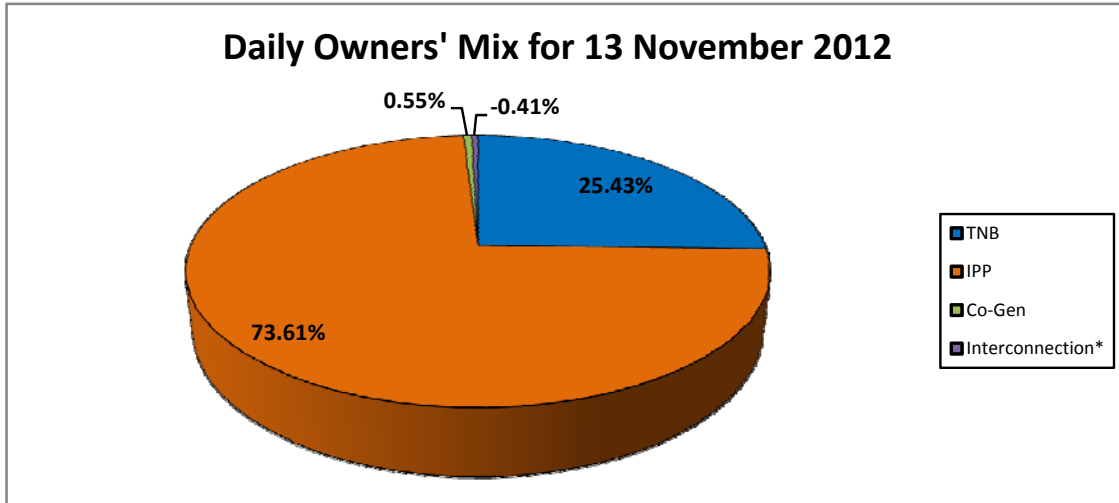
Electricity Supply & Market Regulations Dept.

Energy Commission Malaysia

14-Nov-12

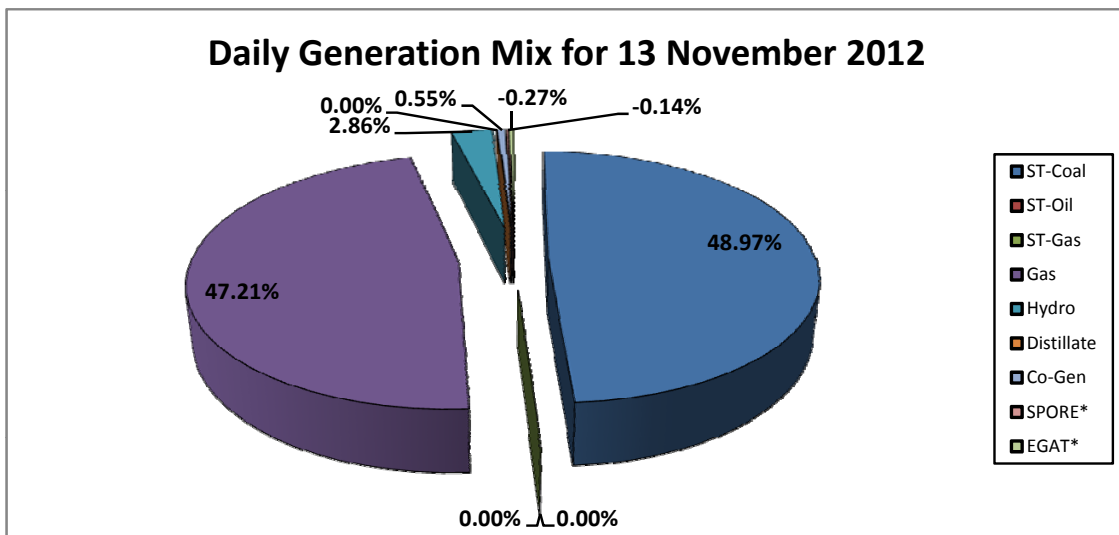
Daily Owners' Mix for 13 November 2012

TNB	64,808	MWh
IPP	187,579	MWh
Co-Gen	1,403	MWh
Interconnection*	(1,041)	MWh



Daily Generation Mix for 13 November 2012

ST-Coal	124,795	MWh
ST-Oil	-	MWh
ST-Gas	-	MWh
Gas	120,300	MWh
Hydro	7,292	MWh
Distillate	-	MWh
Co-Gen	1,403	MWh
SPORE*	(347)	MWh
EGAT*	(694)	MWh



*Negative = energy is imported from Singapore and Thailand
 Positive = energy is exported to Singapore and Thailand