

GRID SYSTEM OPERATION SUMMARY (PENINSULAR MALAYSIA)

	FORECAST	ACTUAL	VARIANCE	
Maximum Demand for 10 November 2012	12,989 MW	13,028 MW	0.30%	
Energy Demand for 10 November 2012	281.61 GWh	280.58 GWh	-0.37%	
Highest Maximum Demand (20 June 2012)	15,685 MW	15,826 MW	0.90%	*New MD
Highest Daily Energy Demand (20 June 2012)	326.75 GWh	328.72 GWh	0.60%	*New Energy

Prepared by:

Electricity Market Operations

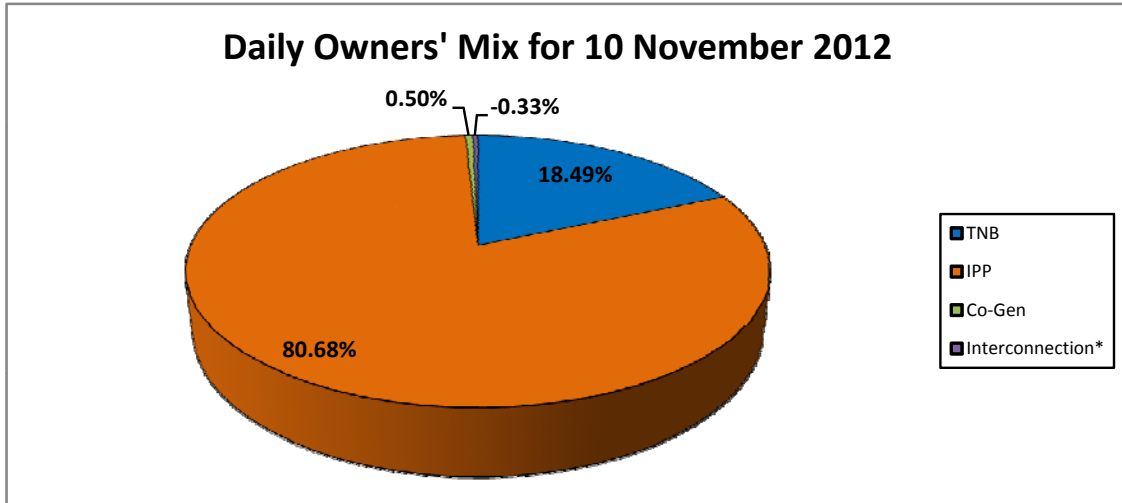
Electricity Supply & Market Regulations Dept.

Energy Commission Malaysia

11-Nov-12

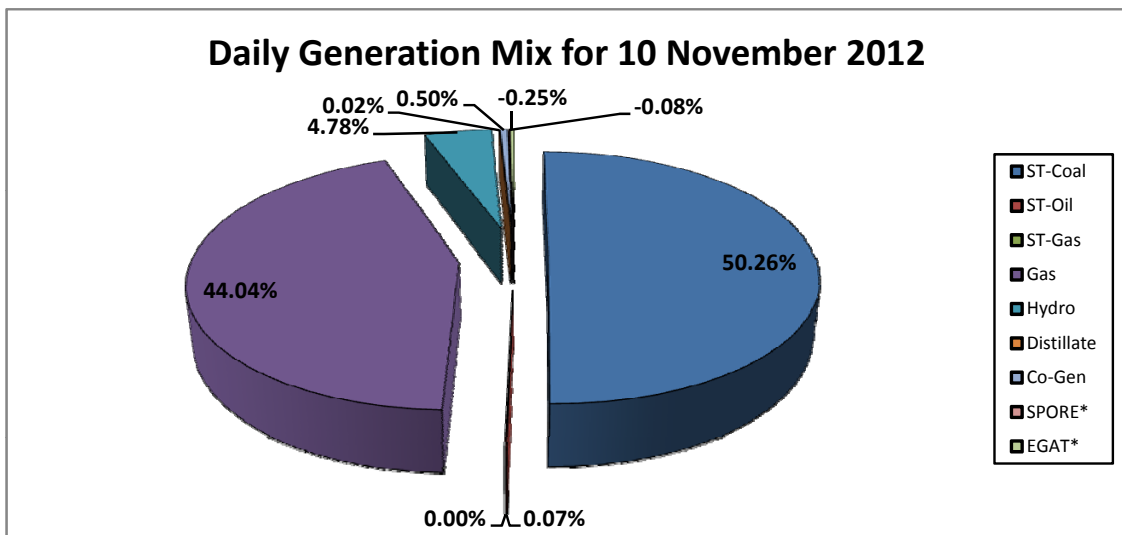
Daily Owners' Mix for 10 November 2012

TNB	51,874 MWh
IPP	226,375 MWh
Co-Gen	1,409 MWh
Interconnection*	(922) MWh



Daily Generation Mix for 10 November 2012

ST-Coal	141,031 MWh
ST-Oil	200 MWh
ST-Gas	- MWh
Gas	123,566 MWh
Hydro	13,405 MWh
Distillate	47 MWh
Co-Gen	1,409 MWh
SPORE*	(226) MWh
EGAT*	(696) MWh



*Negative = energy is imported from Singapore and Thailand
 Positive = energy is exported to Singapore and Thailand