

GRID SYSTEM OPERATION SUMMARY (PENINSULAR MALAYSIA)

	FORECAST	ACTUAL	VARIANCE	
Maximum Demand for 6 November 2012	14,666 MW	14,810 MW	0.98%	
Energy Demand for 6 November 2012	302.47 GWh	302.57 GWh	0.03%	
Highest Maximum Demand (20 June 2012)	15,685 MW	15,826 MW	0.90%	*New MD
Highest Daily Energy Demand (20 June 2012)	326.75 GWh	328.72 GWh	0.60%	*New Energy

Prepared by:

Electricity Market Operations

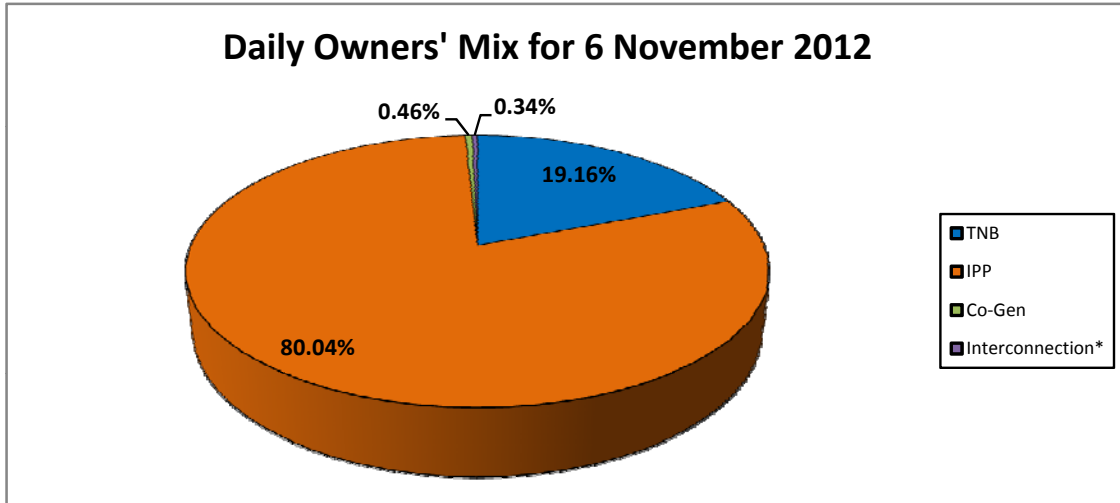
Electricity Supply & Market Regulations Dept.

Energy Commission Malaysia

07-Nov-12

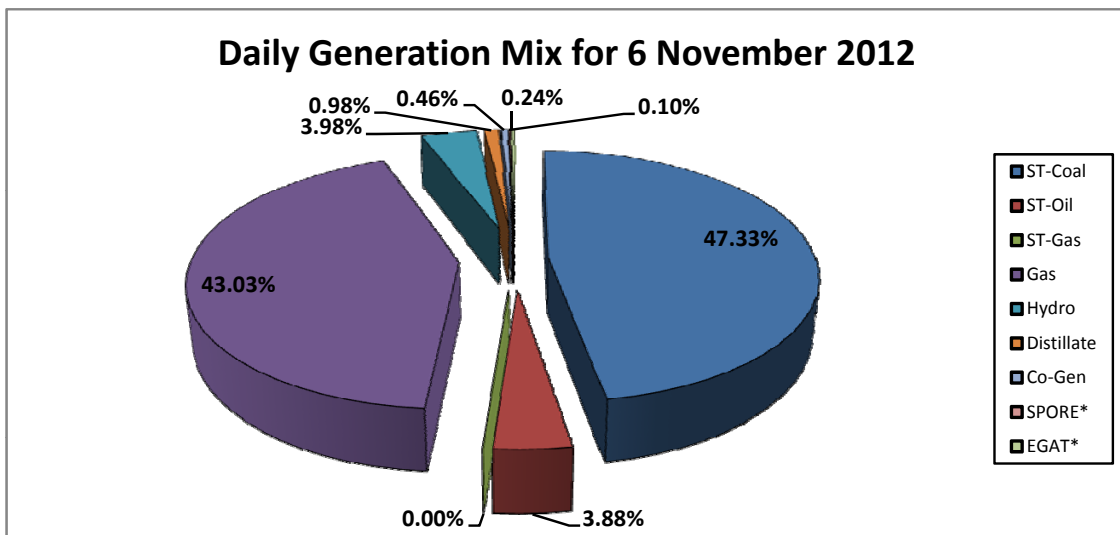
Daily Owners' Mix for 6 November 2012

TNB	58,364 MWh
IPP	243,835 MWh
Co-Gen	1,411 MWh
Interconnection*	1,045 MWh



Daily Generation Mix for 6 November 2012

ST-Coal	144,192 MWh
ST-Oil	11,808 MWh
ST-Gas	- MWh
Gas	131,088 MWh
Hydro	12,134 MWh
Distillate	2,977 MWh
Co-Gen	1,411 MWh
SPORE*	319 MWh
EGAT*	726 MWh



*Negative = energy is imported from Singapore and Thailand
 Positive = energy is exported to Singapore and Thailand