

GRID SYSTEM OPERATION SUMMARY (PENINSULAR MALAYSIA)

	FORECAST	ACTUAL	VARIANCE	
Maximum Demand for 5 November 2012	14,881 MW	14,542 MW	-2.28%	
Energy Demand for 5 November 2012	300.61 GWh	294.52 GWh	-2.03%	
Highest Maximum Demand (20 June 2012)	15,685 MW	15,826 MW	0.90%	*New MD
Highest Daily Energy Demand (20 June 2012)	326.75 GWh	328.72 GWh	0.60%	*New Energy

Prepared by:

Electricity Market Operations

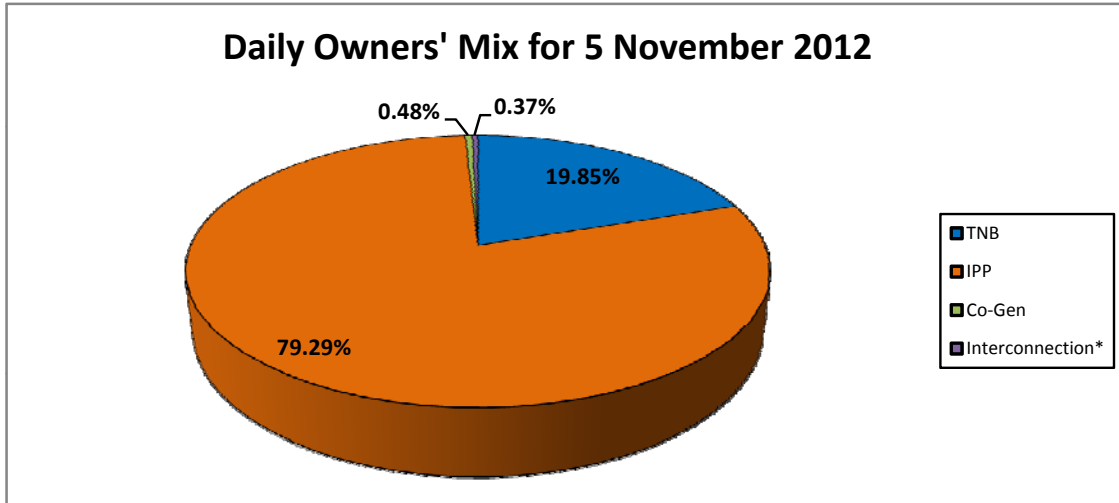
Electricity Supply & Market Regulations Dept.

Energy Commission Malaysia

06-Nov-12

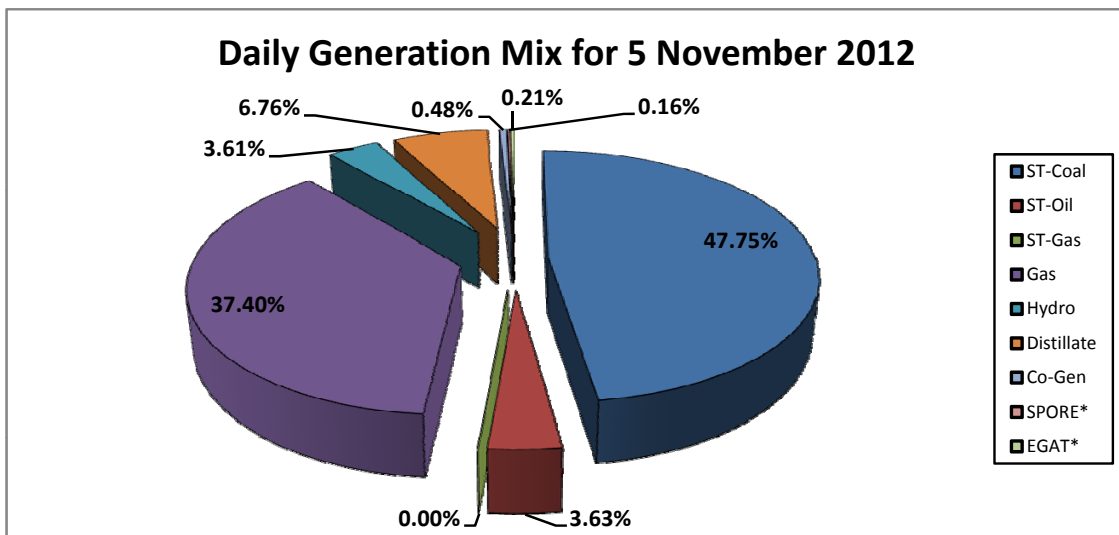
Daily Owners' Mix for 5 November 2012

TNB	58,914 MWh
IPP	235,284 MWh
Co-Gen	1,428 MWh
Interconnection*	1,108 MWh



Daily Generation Mix for 5 November 2012

ST-Coal	141,682 MWh
ST-Oil	10,765 MWh
ST-Gas	- MWh
Gas	110,993 MWh
Hydro	10,709 MWh
Distillate	20,049 MWh
Co-Gen	1,428 MWh
SPORE*	477 MWh
EGAT*	631 MWh



*Negative = energy is imported from Singapore and Thailand
 Positive = energy is exported to Singapore and Thailand