

GRID SYSTEM OPERATION SUMMARY (PENINSULAR MALAYSIA)

	FORECAST	ACTUAL	VARIANCE	
Maximum Demand for 4 November 2012	12,508 MW	12,093 MW	-3.32%	
Energy Demand for 4 November 2012	265.93 GWh	258.01 GWh	-2.98%	
Highest Maximum Demand (20 June 2012)	15,685 MW	15,826 MW	0.90%	*New MD
Highest Daily Energy Demand (20 June 2012)	326.75 GWh	328.72 GWh	0.60%	*New Energy

Prepared by:

Electricity Market Operations

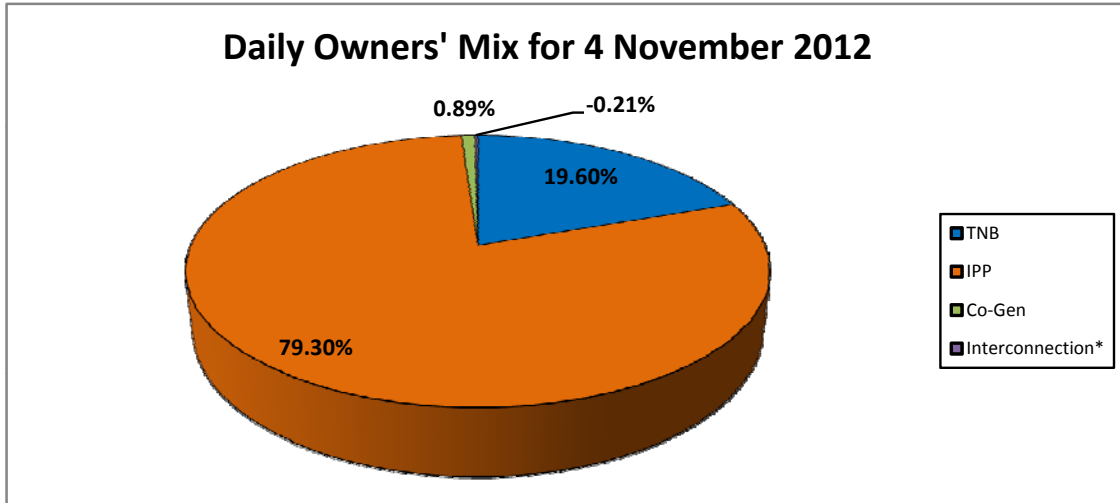
Electricity Supply & Market Regulations Dept.

Energy Commission Malaysia

05-Nov-12

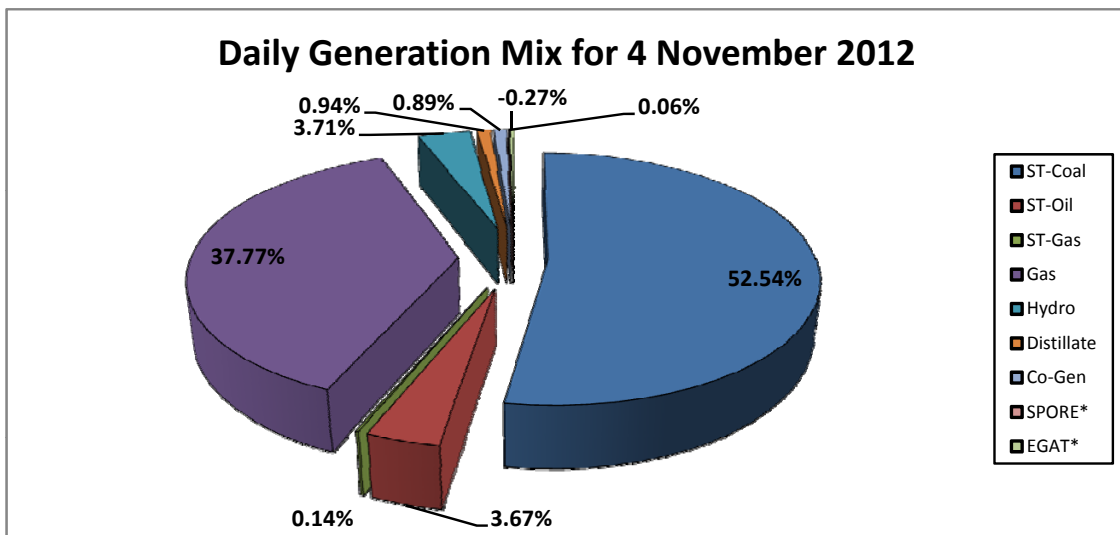
Daily Owners' Mix for 4 November 2012

TNB	50,560 MWh
IPP	204,610 MWh
Co-Gen	2,305 MWh
Interconnection*	(533) MWh



Daily Generation Mix for 4 November 2012

ST-Coal	135,740 MWh
ST-Oil	9,493 MWh
ST-Gas	350 MWh
Gas	97,574 MWh
Hydro	9,573 MWh
Distillate	2,440 MWh
Co-Gen	2,305 MWh
SPORE*	167 MWh
EGAT*	(700) MWh



*Negative = energy is imported from Singapore and Thailand
 Positive = energy is exported to Singapore and Thailand