

GRID SYSTEM OPERATION SUMMARY (PENINSULAR MALAYSIA)

	FORECAST	ACTUAL	VARIANCE	
Maximum Demand for 26 October 2012	11,805 MW	11,656 MW	-1.26%	
Energy Demand for 26 October 2012	253.71 GWh	247.46 GWh	-2.46%	
Highest Maximum Demand (20 June 2012)	15,685 MW	15,826 MW	0.90%	*New MD
Highest Daily Energy Demand (20 June 2012)	326.75 GWh	328.72 GWh	0.60%	*New Energy

Prepared by:

Electricity Market Operations

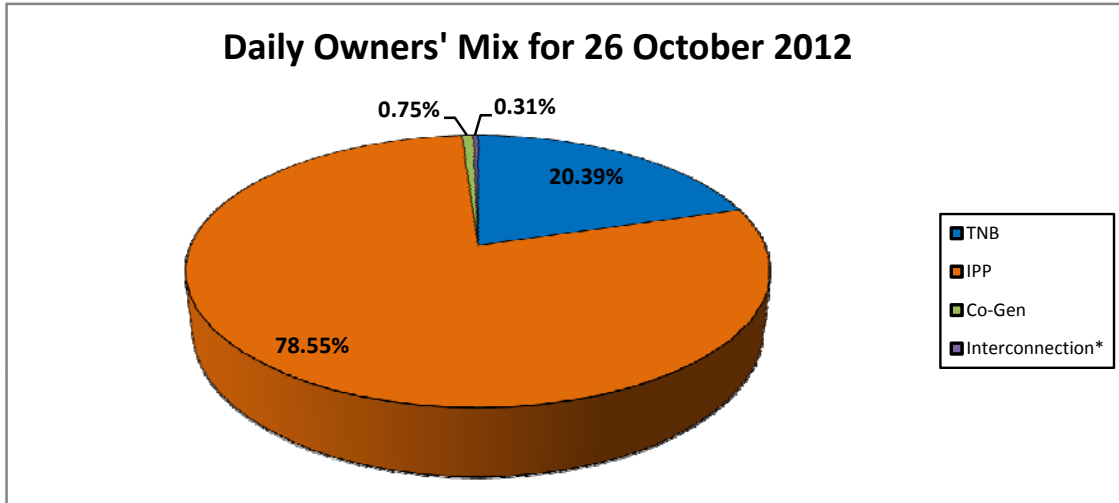
Electricity Supply & Market Regulations Dept.

Energy Commission Malaysia

27-Oct-12

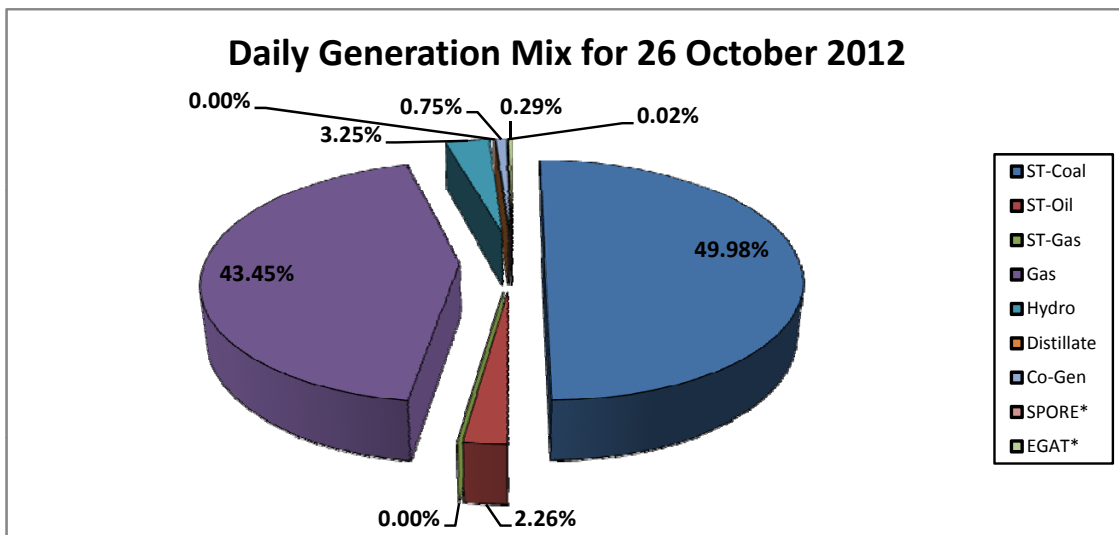
Daily Owners' Mix for 26 October 2012

TNB	50,771 MWh
IPP	195,589 MWh
Co-Gen	1,872 MWh
Interconnection*	772 MWh



Daily Generation Mix for 26 October 2012

ST-Coal	124,449 MWh
ST-Oil	5,616 MWh
ST-Gas	- MWh
Gas	108,198 MWh
Hydro	8,097 MWh
Distillate	- MWh
Co-Gen	1,872 MWh
SPORE*	52 MWh
EGAT*	720 MWh



*Negative = energy is imported from Singapore and Thailand
 Positive = energy is exported to Singapore and Thailand