

## GRID SYSTEM OPERATION SUMMARY (PENINSULAR MALAYSIA)

	FORECAST	ACTUAL	VARIANCE	
Maximum Demand for 15 October 2012	14,850 MW	15,032 MW	1.23%	
Energy Demand for 15 October 2012	305.01 GWh	307.34 GWh	0.76%	
Highest Maximum Demand (20 June 2012)	15,685 MW	15,826 MW	0.90%	*New MD
Highest Daily Energy Demand (20 June 2012)	326.75 GWh	328.72 GWh	0.60%	*New Energy

Prepared by:

Electricity Market Operations

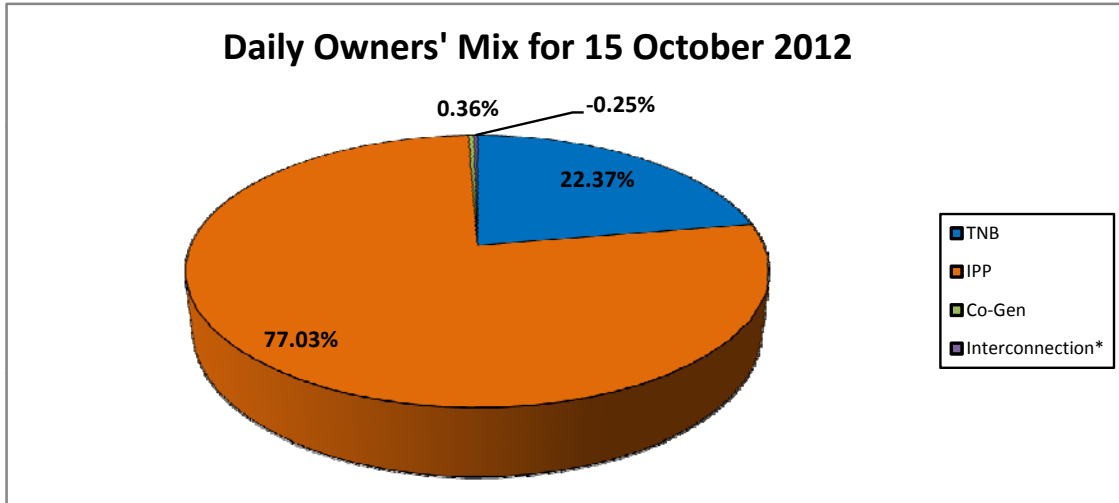
Electricity Supply & Market Regulations Dept.

Energy Commission Malaysia

16-Oct-12

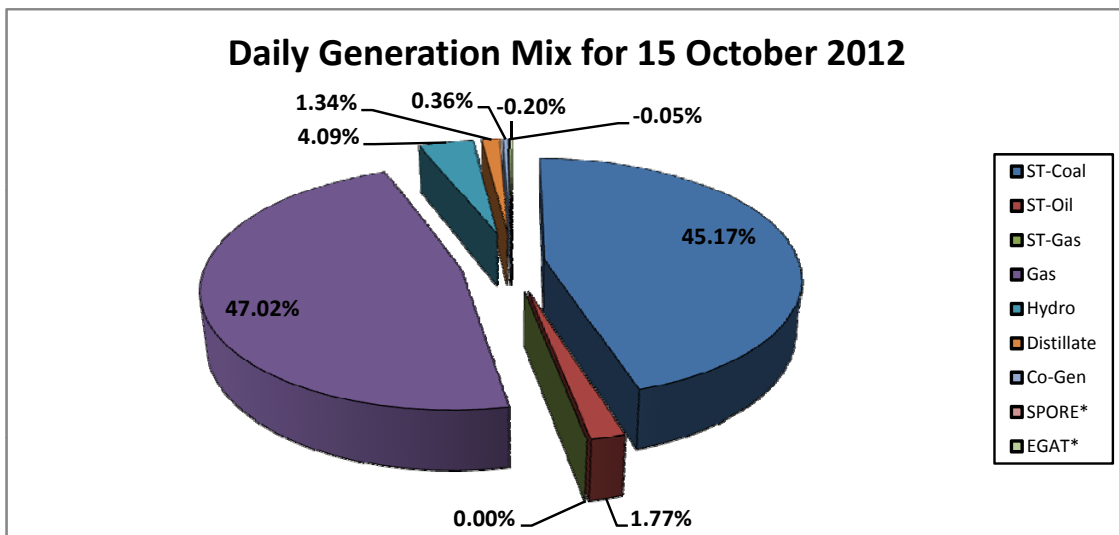
**Daily Owners' Mix for 15 October 2012**

TNB	68,738 MWh
IPP	236,750 MWh
Co-Gen	1,096 MWh
Interconnection*	(755) MWh



**Daily Generation Mix for 15 October 2012**

ST-Coal	138,824 MWh
ST-Oil	5,452 MWh
ST-Gas	- MWh
Gas	144,499 MWh
Hydro	12,583 MWh
Distillate	4,130 MWh
Co-Gen	1,096 MWh
SPORE*	(144) MWh
EGAT*	(611) MWh



\*Negative = energy is imported from Singapore and Thailand  
 Positive = energy is exported to Singapore and Thailand