

**GRID SYSTEM OPERATION SUMMARY (PENINSULAR MALAYSIA)**

	<b>FORECAST</b>	<b>ACTUAL</b>	<b>VARIANCE</b>	
<b>Maximum Demand for 12 October 2012</b>	14,995 MW	15,010 MW	0.10%	
<b>Energy Demand for 12 October 2012</b>	311.44 GWh	309.90 GWh	-0.49%	
<b>Highest Maximum Demand (20 June 2012)</b>	15,685 MW	15,826 MW	0.90%	<b>*New MD</b>
<b>Highest Daily Energy Demand (20 June 2012)</b>	326.75 GWh	328.72 GWh	0.60%	<b>*New Energy</b>

Prepared by:

Electricity Market Operations

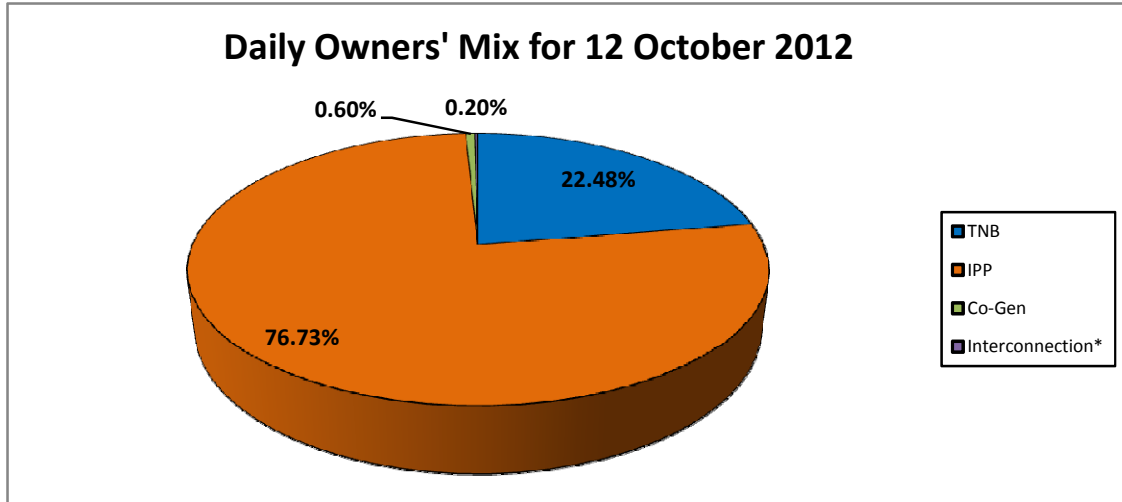
Electricity Supply & Market Regulations Dept.

Energy Commission Malaysia

13-Oct-12

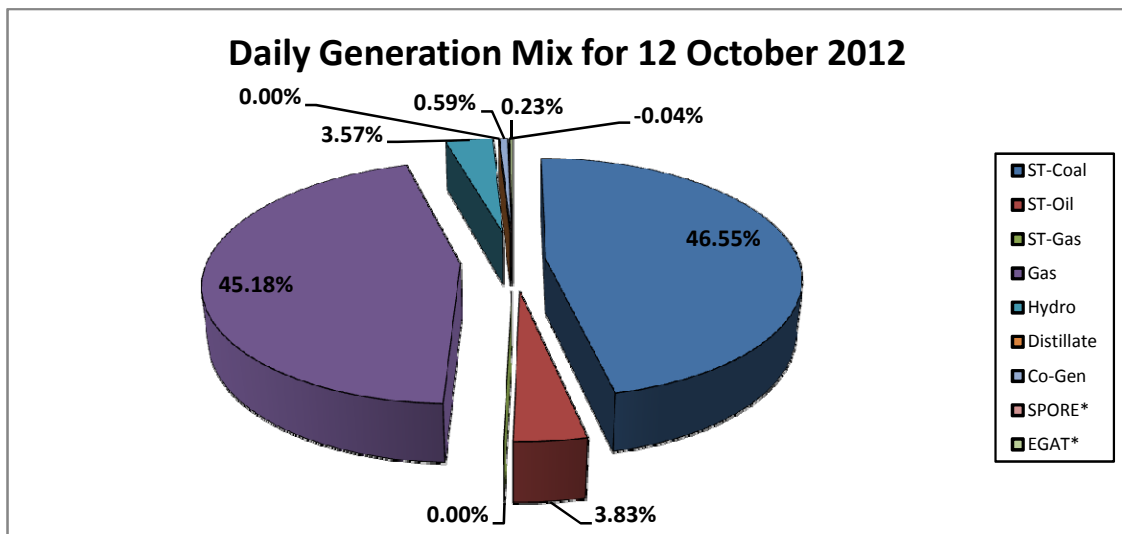
**Daily Owners' Mix for 12 October 2012**

TNB	69,938 MWh
IPP	238,721 MWh
Co-Gen	1,852 MWh
Interconnection*	615 MWh



**Daily Generation Mix for 12 October 2012**

ST-Coal	144,949 MWh
ST-Oil	11,920 MWh
ST-Gas	- MWh
Gas	140,670 MWh
Hydro	11,120 MWh
Distillate	- MWh
Co-Gen	1,852 MWh
SPORE*	(113) MWh
EGAT*	728 MWh



\*Negative = energy is imported from Singapore and Thailand  
 Positive = energy is exported to Singapore and Thailand