

GRID SYSTEM OPERATION SUMMARY (PENINSULAR MALAYSIA)

	FORECAST	ACTUAL	VARIANCE	
Maximum Demand for 11 October 2012	15,175 MW	15,208 MW	0.22%	
Energy Demand for 11 October 2012	315.04 GWh	314.59 GWh	-0.14%	
Highest Maximum Demand (20 June 2012)	15,685 MW	15,826 MW	0.90%	*New MD
Highest Daily Energy Demand (20 June 2012)	326.75 GWh	328.72 GWh	0.60%	*New Energy

Prepared by:

Electricity Market Operations

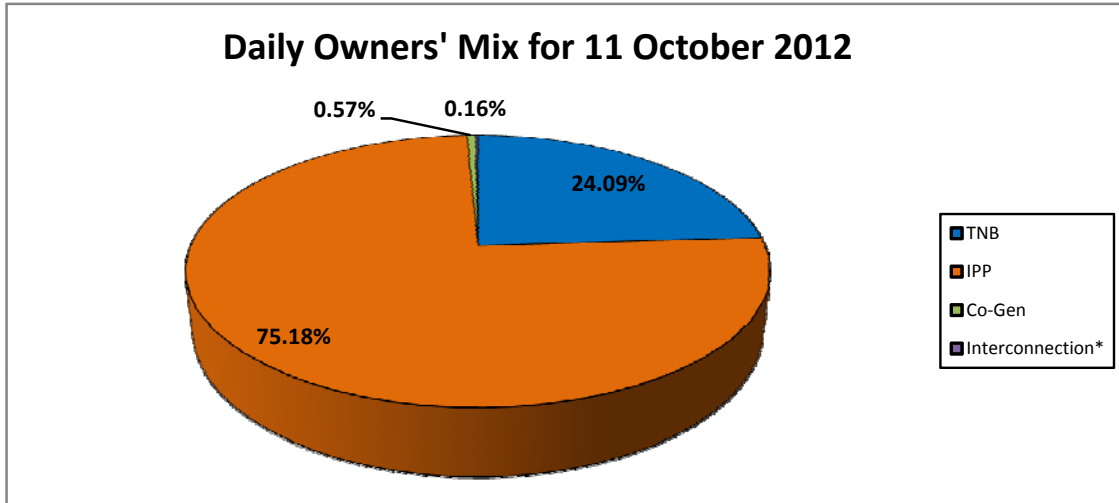
Electricity Supply & Market Regulations Dept.

Energy Commission Malaysia

12-Oct-12

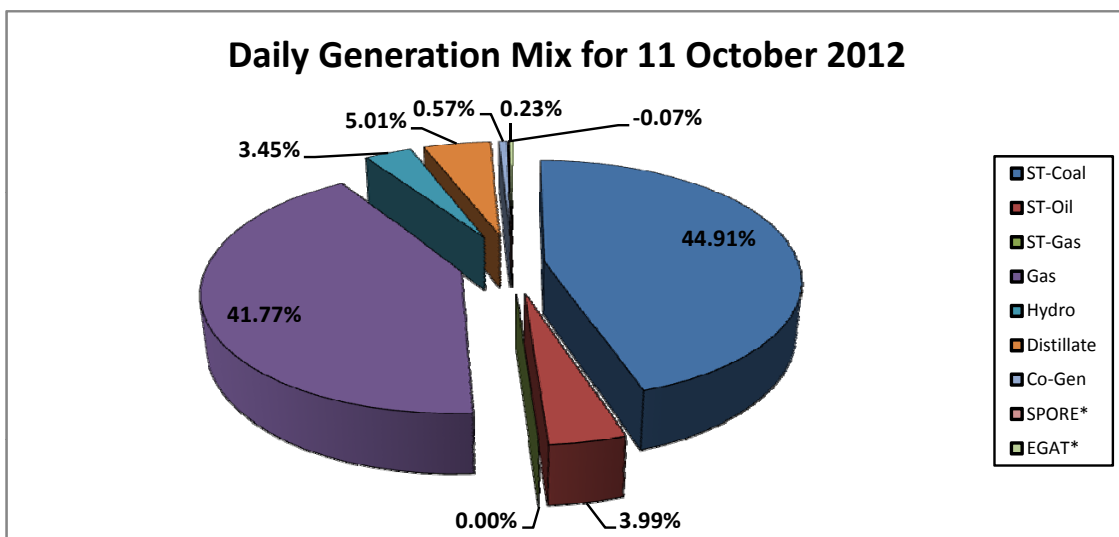
Daily Owners' Mix for 11 October 2012

TNB	76,034 MWh
IPP	237,271 MWh
Co-Gen	1,790 MWh
Interconnection*	507 MWh



Daily Generation Mix for 11 October 2012

ST-Coal	141,925 MWh
ST-Oil	12,615 MWh
ST-Gas	- MWh
Gas	132,014 MWh
Hydro	10,910 MWh
Distillate	15,841 MWh
Co-Gen	1,790 MWh
SPORE*	(216) MWh
EGAT*	723 MWh



*Negative = energy is imported from Singapore and Thailand
 Positive = energy is exported to Singapore and Thailand