

GRID SYSTEM OPERATION SUMMARY (PENINSULAR MALAYSIA)

	FORECAST	ACTUAL	VARIANCE	
Maximum Demand for 10 October 2012	15,386 MW	15,408 MW	0.14%	
Energy Demand for 10 October 2012	319.92 GWh	318.47 GWh	-0.45%	
Highest Maximum Demand (20 June 2012)	15,685 MW	15,826 MW	0.90%	*New MD
Highest Daily Energy Demand (20 June 2012)	326.75 GWh	328.72 GWh	0.60%	*New Energy

Prepared by:

Electricity Market Operations

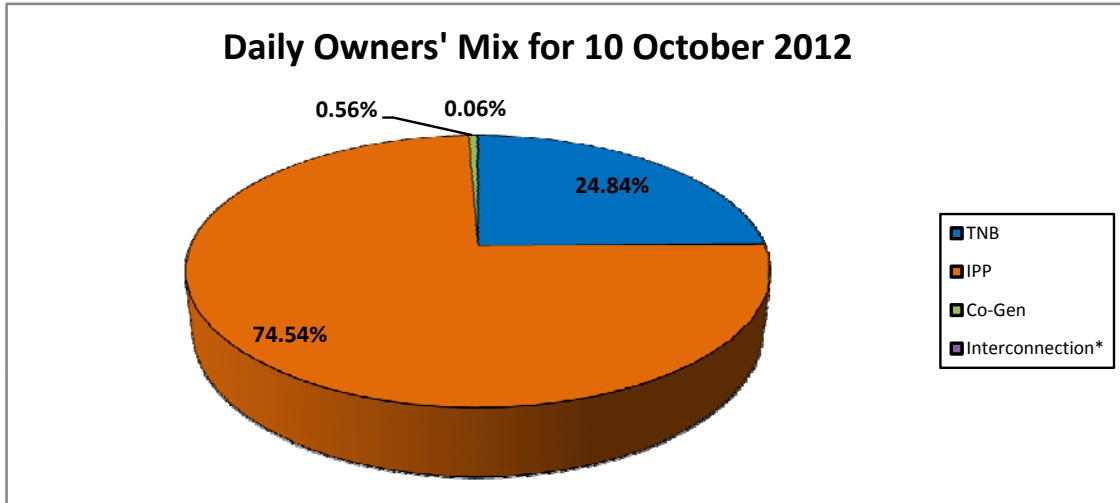
Electricity Supply & Market Regulations Dept.

Energy Commission Malaysia

11-Oct-12

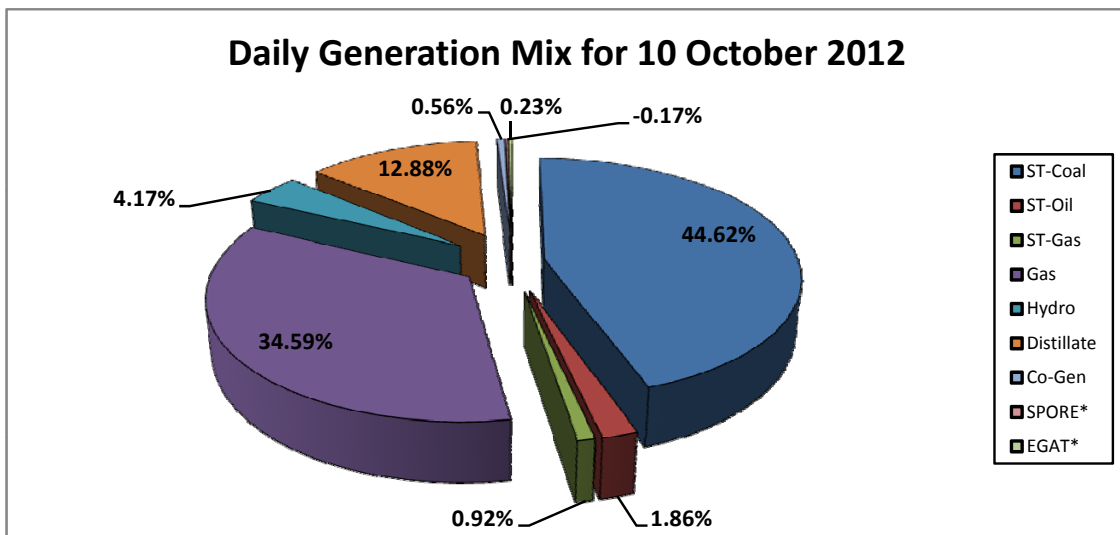
Daily Owners' Mix for 10 October 2012

TNB	79,208 MWh
IPP	237,671 MWh
Co-Gen	1,781 MWh
Interconnection*	191 MWh



Daily Generation Mix for 10 October 2012

ST-Coal	142,745 MWh
ST-Oil	5,966 MWh
ST-Gas	2,944 MWh
Gas	110,672 MWh
Hydro	13,341 MWh
Distillate	41,211 MWh
Co-Gen	1,781 MWh
SPORE*	(538) MWh
EGAT*	729 MWh



*Negative = energy is imported from Singapore and Thailand
 Positive = energy is exported to Singapore and Thailand