

GRID SYSTEM OPERATION SUMMARY (PENINSULAR MALAYSIA)

	FORECAST	ACTUAL	VARIANCE	
Maximum Demand for 9 October 2012	15,313 MW	15,436 MW	0.80%	
Energy Demand for 9 October 2012	319.37 GWh	319.55 GWh	0.06%	
Highest Maximum Demand (20 June 2012)	15,685 MW	15,826 MW	0.90%	*New MD
Highest Daily Energy Demand (20 June 2012)	326.75 GWh	328.72 GWh	0.60%	*New Energy

Prepared by:

Electricity Market Operations

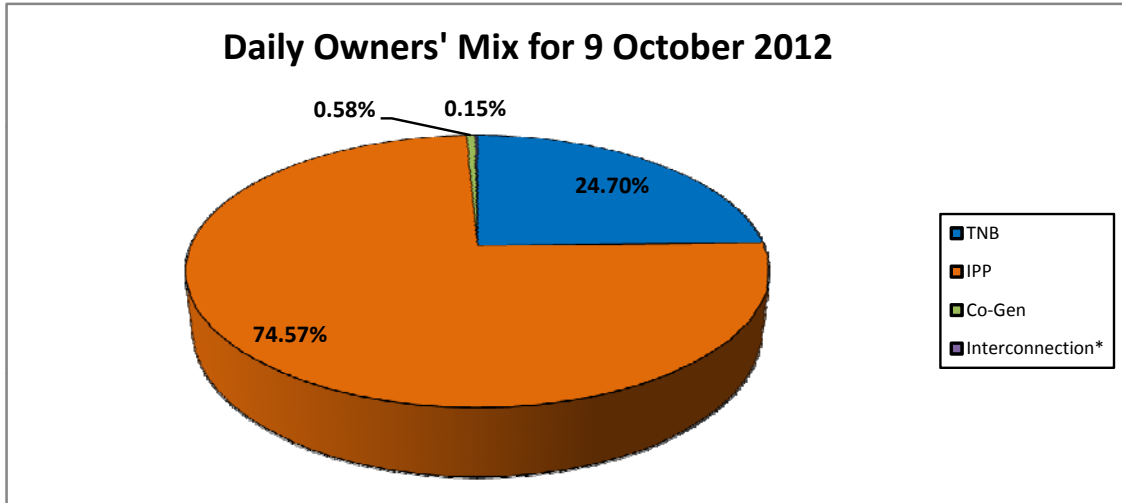
Electricity Supply & Market Regulations Dept.

Energy Commission Malaysia

10-Oct-12

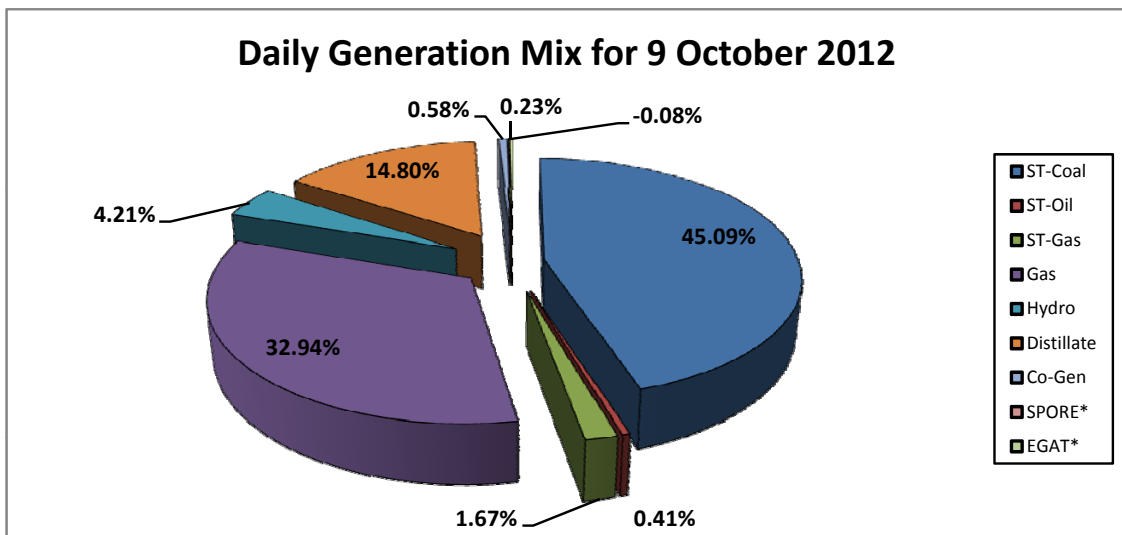
Daily Owners' Mix for 9 October 2012

TNB	79,160 MWh
IPP	239,015 MWh
Co-Gen	1,854 MWh
Interconnection*	477 MWh



Daily Generation Mix for 9 October 2012

ST-Coal	144,727 MWh
ST-Oil	1,304 MWh
ST-Gas	5,366 MWh
Gas	105,754 MWh
Hydro	13,518 MWh
Distillate	47,506 MWh
Co-Gen	1,854 MWh
SPORE*	(250) MWh
EGAT*	727 MWh



*Negative = energy is imported from Singapore and Thailand
 Positive = energy is exported to Singapore and Thailand