

GRID SYSTEM OPERATION SUMMARY (PENINSULAR MALAYSIA)

	FORECAST	ACTUAL	VARIANCE	
Maximum Demand for 8 October 2012	15,138 MW	15,197 MW	0.39%	
Energy Demand for 8 October 2012	311.09 GWh	310.62 GWh	-0.15%	
Highest Maximum Demand (20 June 2012)	15,685 MW	15,826 MW	0.90%	*New MD
Highest Daily Energy Demand (20 June 2012)	326.75 GWh	328.72 GWh	0.60%	*New Energy

Prepared by:

Electricity Market Operations

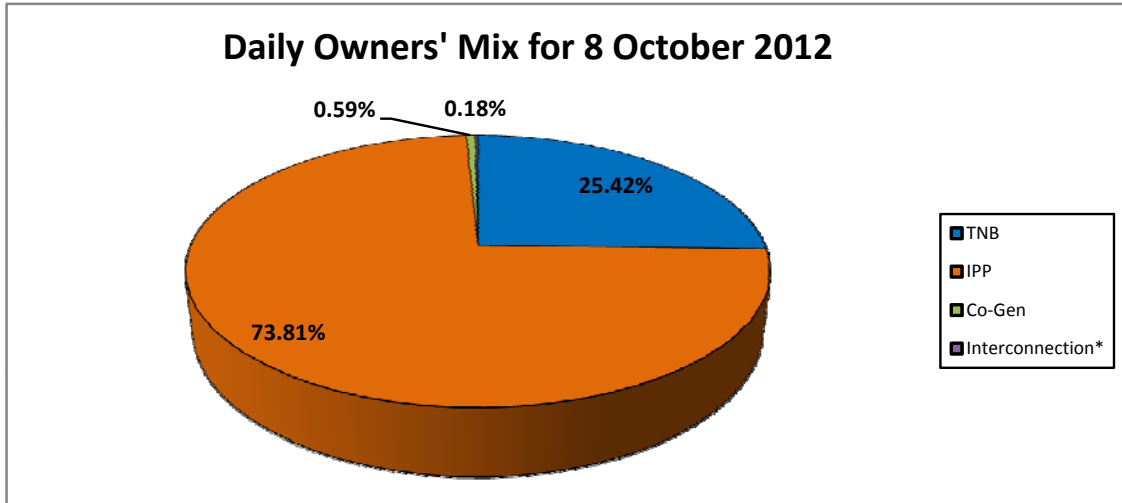
Electricity Supply & Market Regulations Dept.

Energy Commission Malaysia

09-Oct-12

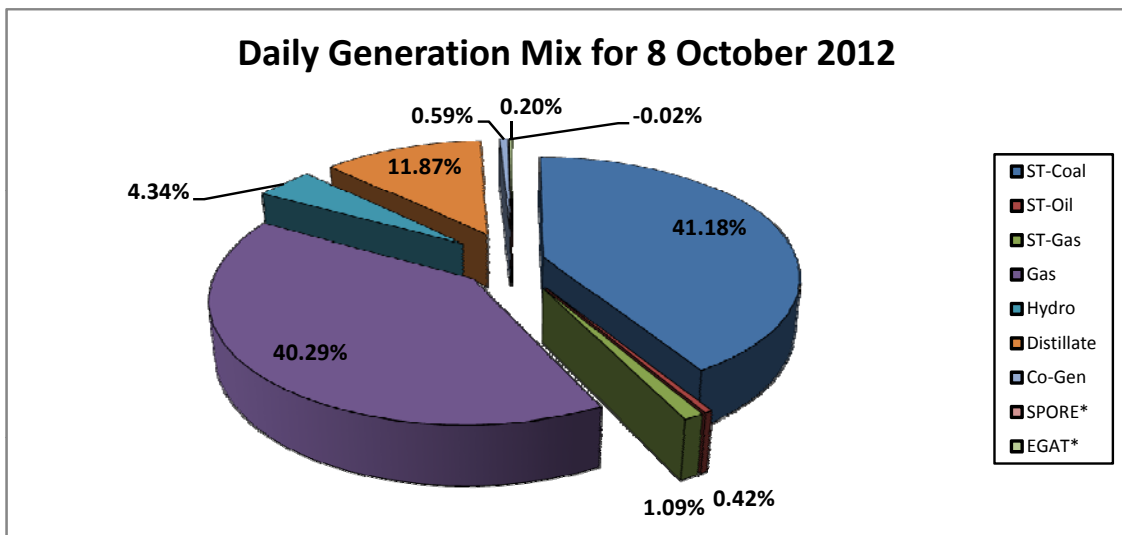
Daily Owners' Mix for 8 October 2012

TNB	79,247	MWh
IPP	230,104	MWh
Co-Gen	1,835	MWh
Interconnection*	563	MWh



Daily Generation Mix for 8 October 2012

ST-Coal	128,422	MWh
ST-Oil	1,308	MWh
ST-Gas	3,388	MWh
Gas	125,658	MWh
Hydro	13,539	MWh
Distillate	37,036	MWh
Co-Gen	1,835	MWh
SPORE*	(68)	MWh
EGAT*	631	MWh



*Negative = energy is imported from Singapore and Thailand
 Positive = energy is exported to Singapore and Thailand