

GRID SYSTEM OPERATION SUMMARY (PENINSULAR MALAYSIA)

	FORECAST	ACTUAL	VARIANCE	
Maximum Demand for 1 October 2012	15,215 MW	15,168 MW	-0.31%	
Energy Demand for 1 October 2012	312.29 GWh	313.01 GWh	0.23%	
Highest Maximum Demand (20 June 2012)	15,685 MW	15,826 MW	0.90%	*New MD
Highest Daily Energy Demand (20 June 2012)	326.75 GWh	328.72 GWh	0.60%	*New Energy

Prepared by:

Electricity Market Operations

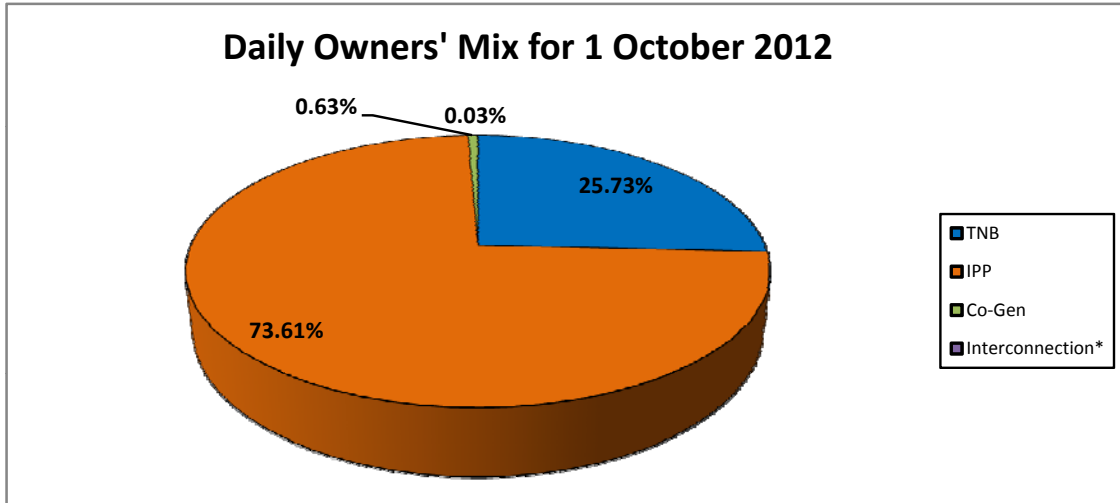
Electricity Supply & Market Regulations Dept.

Energy Commission Malaysia

02-Oct-12

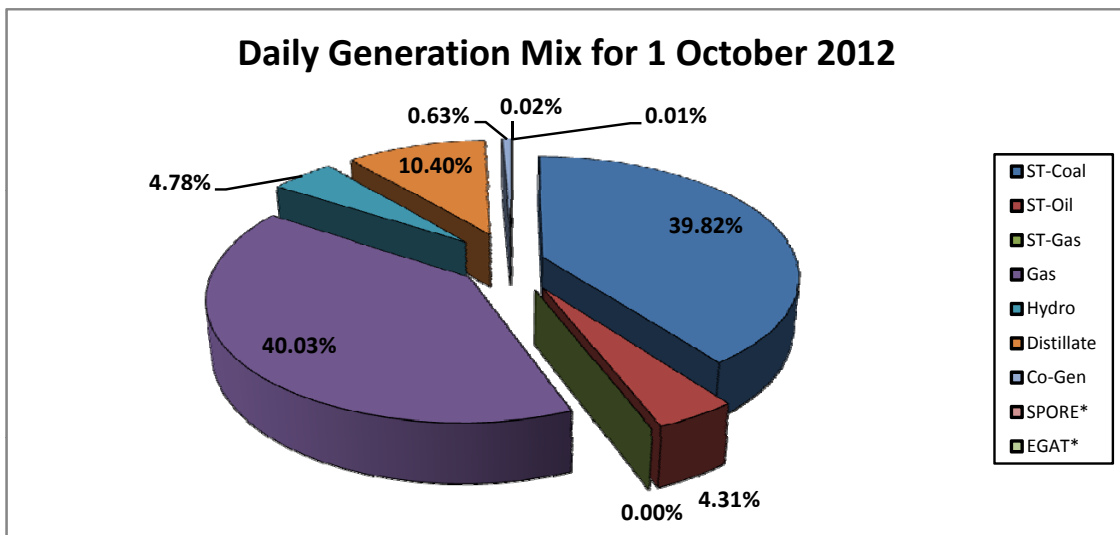
Daily Owners' Mix for 1 October 2012

TNB	80,582 MWh
IPP	230,547 MWh
Co-Gen	1,967 MWh
Interconnection*	84 MWh



Daily Generation Mix for 1 October 2012

ST-Coal	124,719 MWh
ST-Oil	13,493 MWh
ST-Gas	- MWh
Gas	125,376 MWh
Hydro	14,981 MWh
Distillate	32,560 MWh
Co-Gen	1,967 MWh
SPORE*	24 MWh
EGAT*	60 MWh



*Negative = energy is imported from Singapore and Thailand
 Positive = energy is exported to Singapore and Thailand