

## GRID SYSTEM OPERATION SUMMARY (PENINSULAR MALAYSIA)

	FORECAST	ACTUAL	VARIANCE	
Maximum Demand for 4 September 2012	15,339 MW	15,340 MW	0.01%	
Energy Demand for 4 September 2012	321.75 GWh	322.93 GWh	0.37%	
Highest Maximum Demand (20 June 2012)	15,685 MW	15,826 MW	0.90%	*New MD
Highest Daily Energy Demand (20 June 2012)	326.75 GWh	328.72 GWh	0.60%	*New Energy

Prepared by:

Electricity Market Operations

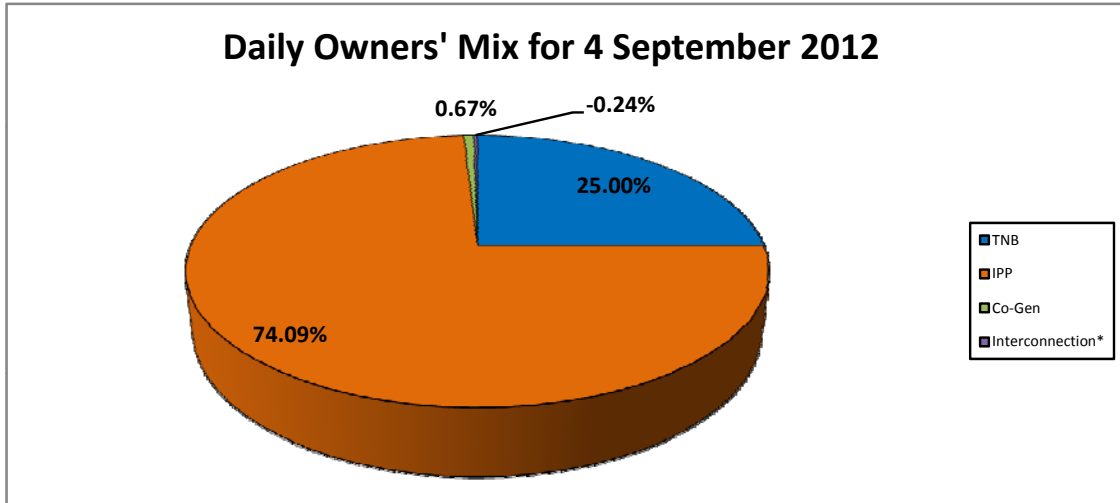
Electricity Supply & Market Regulations Dept.

Energy Commission Malaysia

05-Sep-12

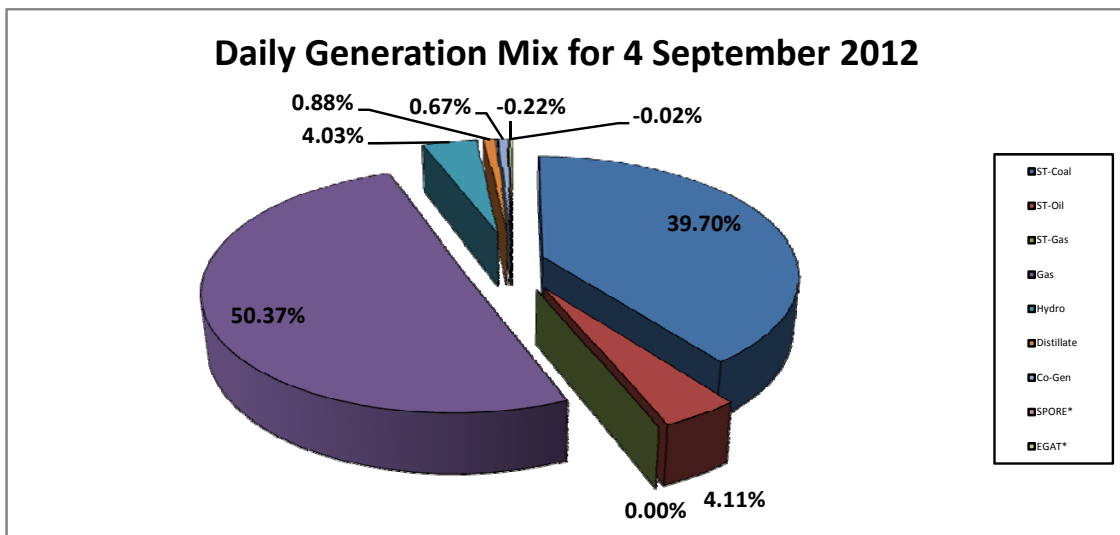
**Daily Owners' Mix for 4 September 2012**

TNB	80,873 MWh
IPP	239,626 MWh
Co-Gen	2,171 MWh
Interconnection*	(762) MWh



**Daily Generation Mix for 4 September 2012**

ST-Coal	128,200 MWh
ST-Oil	13,285 MWh
ST-Gas	- MWh
Gas	162,671 MWh
Hydro	13,016 MWh
Distillate	2,827 MWh
Co-Gen	2,171 MWh
SPORE*	(62) MWh
EGAT*	(700) MWh



\*Negative = energy is imported from Singapore and Thailand  
 Positive = energy is exported to Singapore and Thailand