

## GRID SYSTEM OPERATION SUMMARY (PENINSULAR MALAYSIA)

	FORECAST	ACTUAL	VARIANCE	
Maximum Demand for 1 September 2012	12,964 MW	13,135 MW	1.32%	
Energy Demand for 1 September 2012	273.01 GWh	279.83 GWh	2.50%	
Highest Maximum Demand (20 June 2012)	15,685 MW	15,826 MW	0.90%	*New MD
Highest Daily Energy Demand (20 June 2012)	326.75 GWh	328.72 GWh	0.60%	*New Energy

Prepared by:

Electricity Market Operations

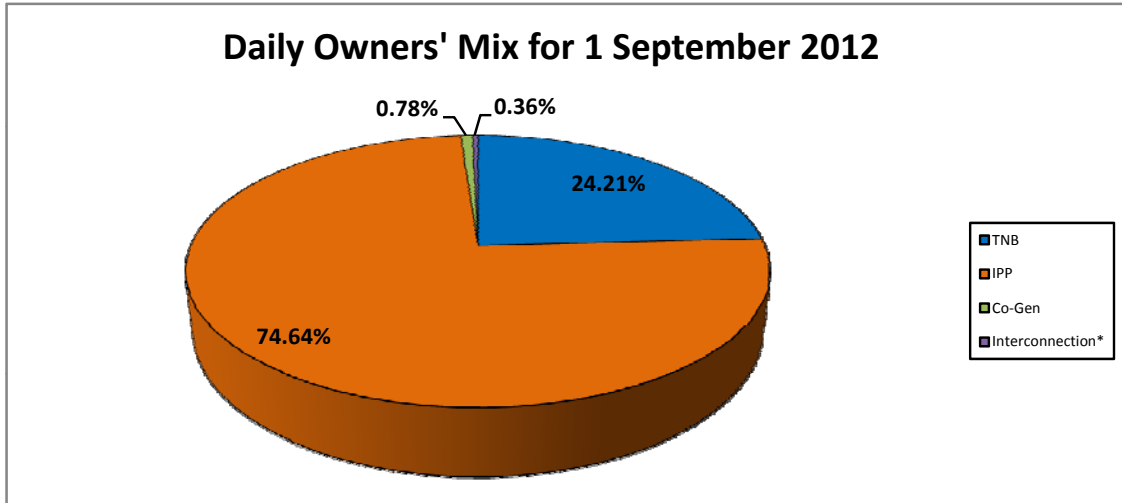
Electricity Supply & Market Regulations Dept.

Energy Commission Malaysia

02-Sep-12

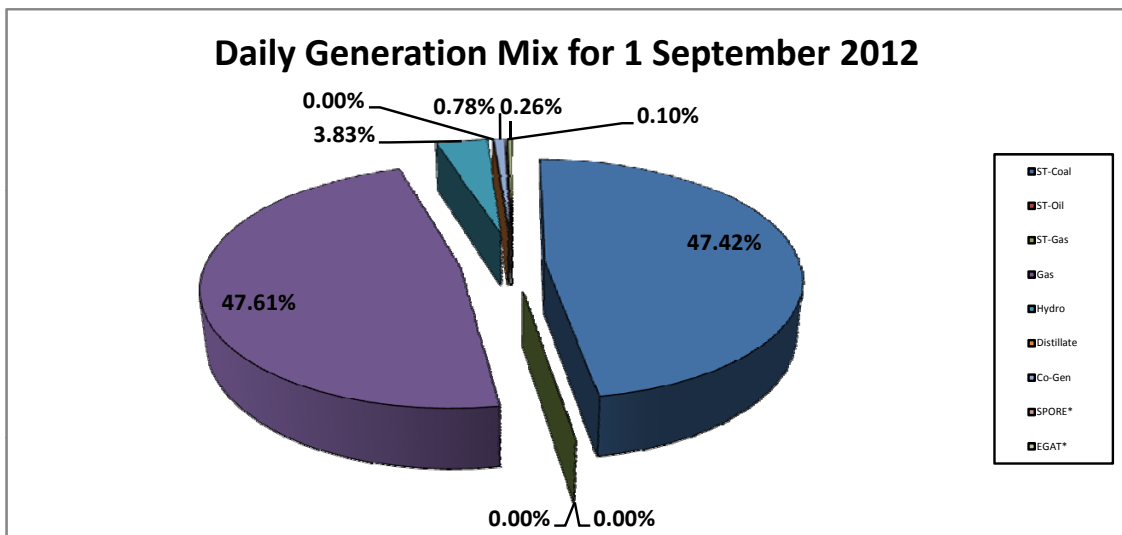
**Daily Owners' Mix for 1 September 2012**

TNB	68,247 MWh
IPP	210,380 MWh
Co-Gen	2,212 MWh
Interconnection*	1,009 MWh



**Daily Generation Mix for 1 September 2012**

ST-Coal	133,642 MWh
ST-Oil	- MWh
ST-Gas	- MWh
Gas	134,178 MWh
Hydro	10,807 MWh
Distillate	- MWh
Co-Gen	2,212 MWh
SPORE*	283 MWh
EGAT*	726 MWh



\*Negative = energy is imported from Singapore and Thailand  
 Positive = energy is exported to Singapore and Thailand