

GRID SYSTEM OPERATION SUMMARY (PENINSULAR MALAYSIA)

	FORECAST	ACTUAL	VARIANCE	
Maximum Demand for 16 August 2012	14,965 MW	14,713 MW	-1.68%	
Energy Demand for 16 August 2012	318.12 GWh	312.82 GWh	-1.67%	
Highest Maximum Demand (20 June 2012)	15,685 MW	15,826 MW	0.90%	*New MD
Highest Daily Energy Demand (20 June 2012)	326.75 GWh	328.72 GWh	0.60%	*New Energy

Prepared by:

Electricity Market Operations

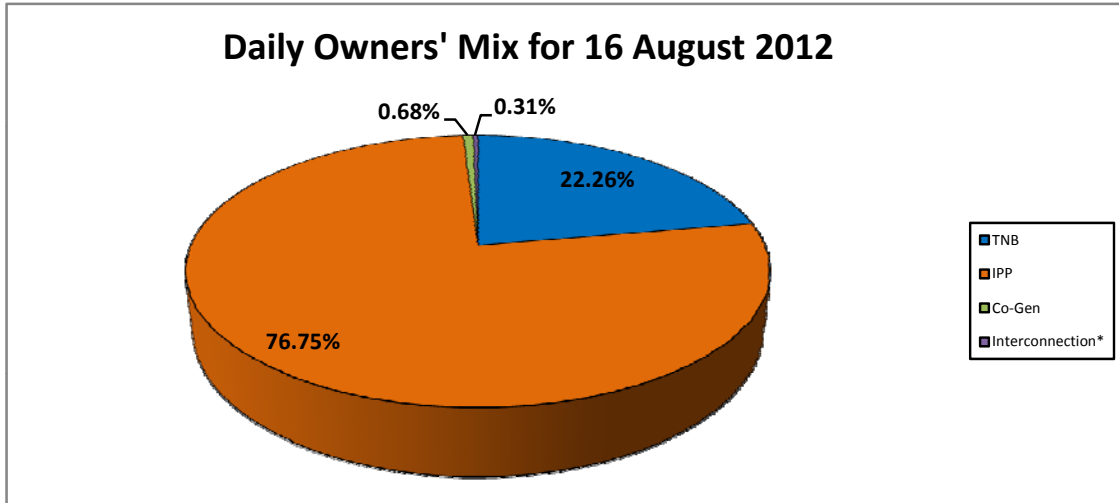
Electricity Supply & Market Regulations Dept.

Energy Commission Malaysia

17-Aug-12

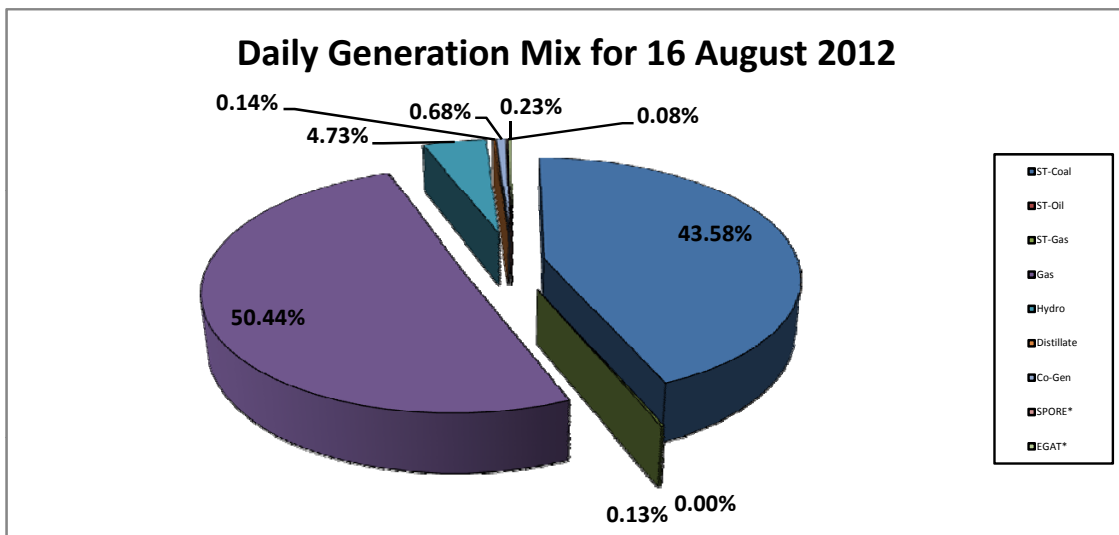
Daily Owners' Mix for 16 August 2012

TNB	70,080 MWh
IPP	241,581 MWh
Co-Gen	2,137 MWh
Interconnection*	976 MWh



Daily Generation Mix for 16 August 2012

ST-Coal	137,184 MWh
ST-Oil	- MWh
ST-Gas	409 MWh
Gas	158,760 MWh
Hydro	14,875 MWh
Distillate	433 MWh
Co-Gen	2,137 MWh
SPORE*	248 MWh
EGAT*	728 MWh



*Negative = energy is imported from Singapore and Thailand
 Positive = energy is exported to Singapore and Thailand