

## GRID SYSTEM OPERATION SUMMARY (PENINSULAR MALAYSIA)

	FORECAST	ACTUAL	VARIANCE	
Maximum Demand for 11 August 2012	13,180 MW	13,586 MW	3.08%	
Energy Demand for 11 August 2012	292.95 GWh	302.03 GWh	3.10%	
Highest Maximum Demand (20 June 2012)	15,685 MW	15,826 MW	0.90%	*New MD
Highest Daily Energy Demand (20 June 2012)	326.75 GWh	328.72 GWh	0.60%	*New Energy

Prepared by:

Electricity Market Operations

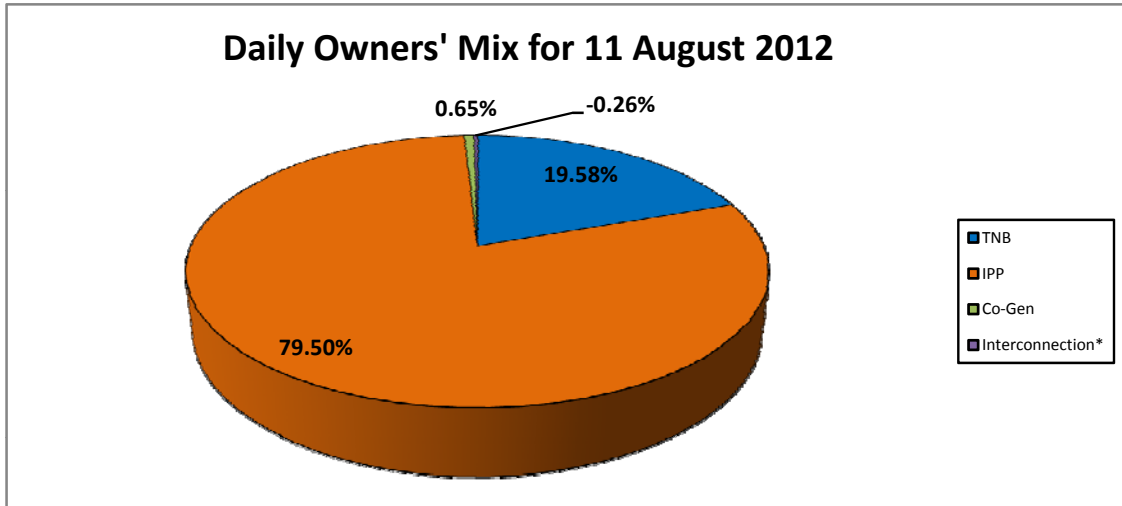
Electricity Supply & Market Regulations Dept.

Energy Commission Malaysia

12-Aug-12

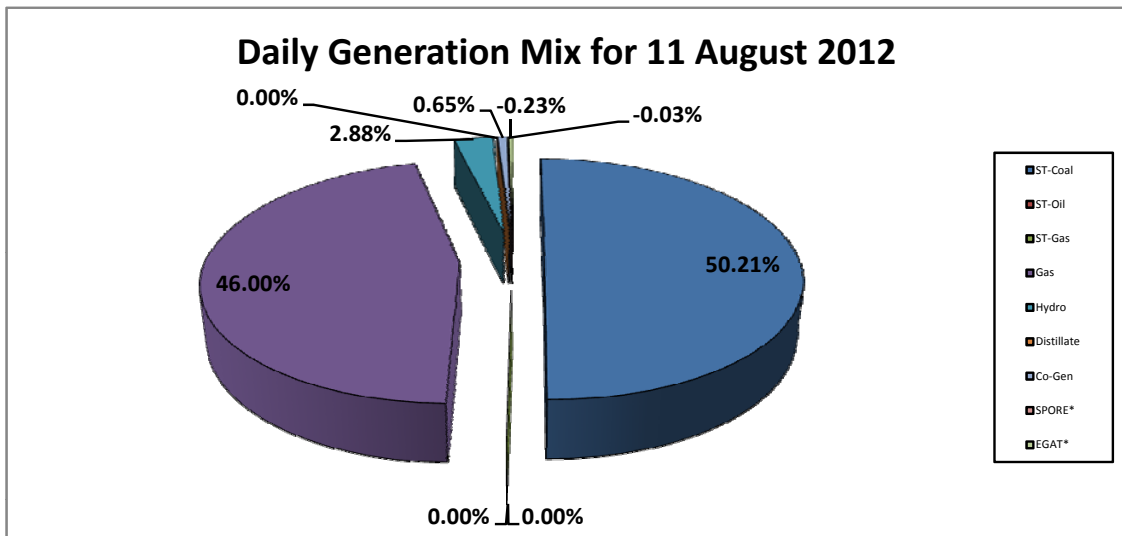
**Daily Owners' Mix for 11 August 2012**

<b>TNB</b>	59,152 MWh
<b>IPP</b>	240,119 MWh
<b>Co-Gen</b>	1,966 MWh
<b>Interconnection*</b>	(795) MWh



**Daily Generation Mix for 11 August 2012**

<b>ST-Coal</b>	151,641 MWh
<b>ST-Oil</b>	- MWh
<b>ST-Gas</b>	- MWh
<b>Gas</b>	138,933 MWh
<b>Hydro</b>	8,697 MWh
<b>Distillate</b>	- MWh
<b>Co-Gen</b>	1,966 MWh
<b>SPORE*</b>	(97) MWh
<b>EGAT*</b>	(698) MWh



\*Negative = energy is imported from Singapore and Thailand  
 Positive = energy is exported to Singapore and Thailand