

**GRID SYSTEM OPERATION SUMMARY (PENINSULAR MALAYSIA)**

|   | <b>FORECAST</b> | <b>ACTUAL</b> | <b>VARIANCE</b> |                    |
|---|-----------------|---------------|-----------------|--------------------|
| <b>Maximum Demand for 10 August 2012</b>          | 15,073 MW       | 15,144 MW     | 0.47%           |                    |
| <b>Energy Demand for 10 August 2012</b>           | 317.13 GWh      | 316.22 GWh    | -0.29%          |                    |
| <b>Highest Maximum Demand (20 June 2012)</b>      | 15,685 MW       | 15,826 MW     | 0.90%           | <b>*New MD</b>     |
| <b>Highest Daily Energy Demand (20 June 2012)</b> | 326.75 GWh      | 328.72 GWh    | 0.60%           | <b>*New Energy</b> |

Prepared by:

Electricity Market Operations

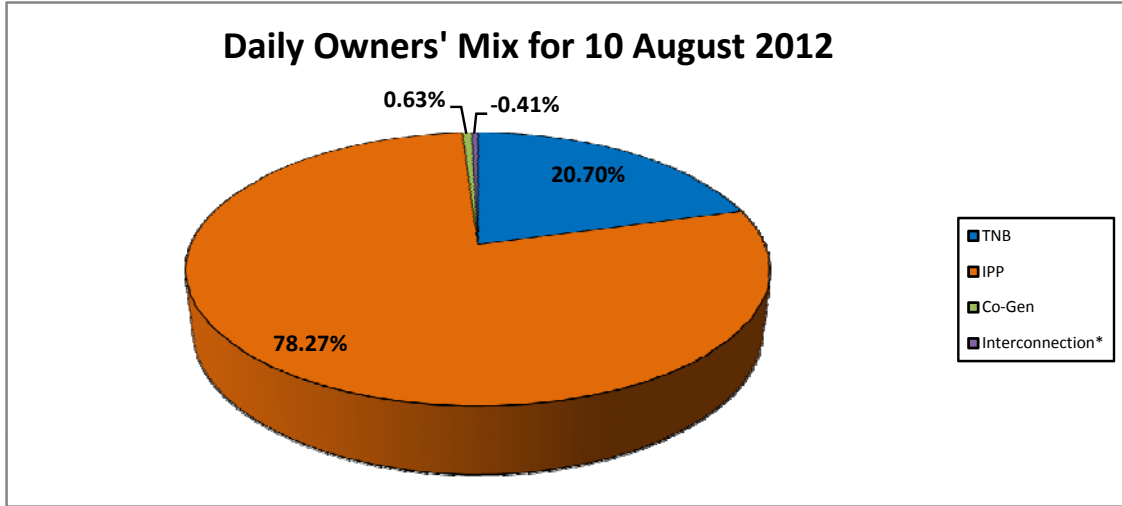
Electricity Supply & Market Regulations Dept.

Energy Commission Malaysia

11-Aug-12

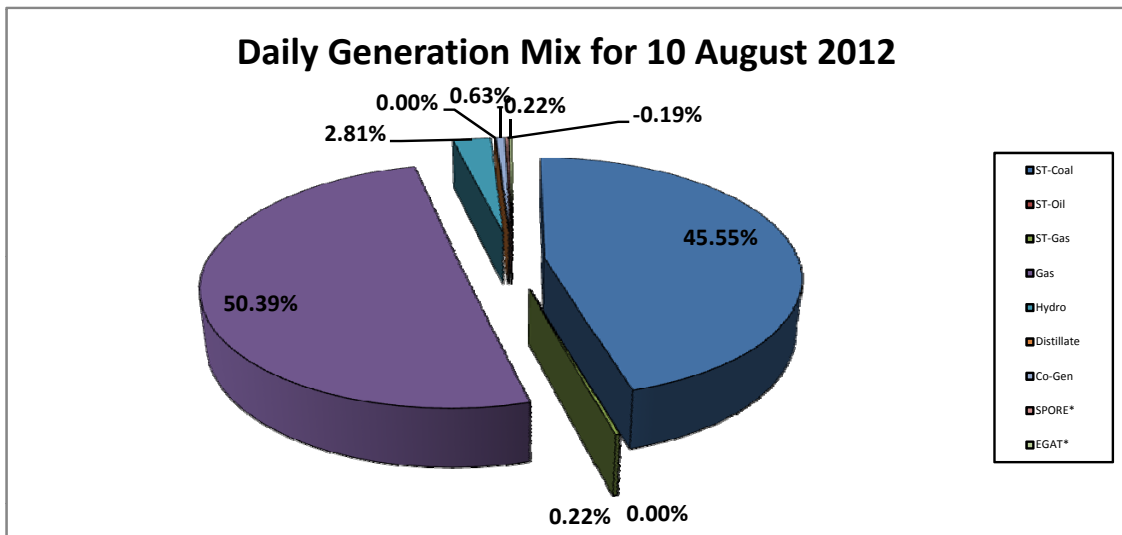
**Daily Owners' Mix for 10 August 2012**

|                  |             |
|------------------|-------------|
| TNB              | 65,454 MWh  |
| IPP              | 247,495 MWh |
| Co-Gen           | 1,983 MWh   |
| Interconnection* | (1,287) MWh |



**Daily Generation Mix for 10 August 2012**

|            |             |
|------------|-------------|
| ST-Coal    | 144,049 MWh |
| ST-Oil     | - MWh       |
| ST-Gas     | 682 MWh     |
| Gas        | 159,334 MWh |
| Hydro      | 8,884 MWh   |
| Distillate | - MWh       |
| Co-Gen     | 1,983 MWh   |
| SPORE*     | (589) MWh   |
| EGAT*      | (698) MWh   |



\*Negative = energy is imported from Singapore and Thailand  
 Positive = energy is exported to Singapore and Thailand