

GRID SYSTEM OPERATION SUMMARY (PENINSULAR MALAYSIA)

	FORECAST	ACTUAL	VARIANCE	
Maximum Demand for 3 August 2012	14,600 MW	14,675 MW	0.51%	
Energy Demand for 3 August 2012	310.41 GWh	308.49 GWh	-0.62%	
Highest Maximum Demand (20 June 2012)	15,685 MW	15,826 MW	0.90%	*New MD
Highest Daily Energy Demand (20 June 2012)	326.75 GWh	328.72 GWh	0.60%	*New Energy

Prepared by:

Electricity Market Operations

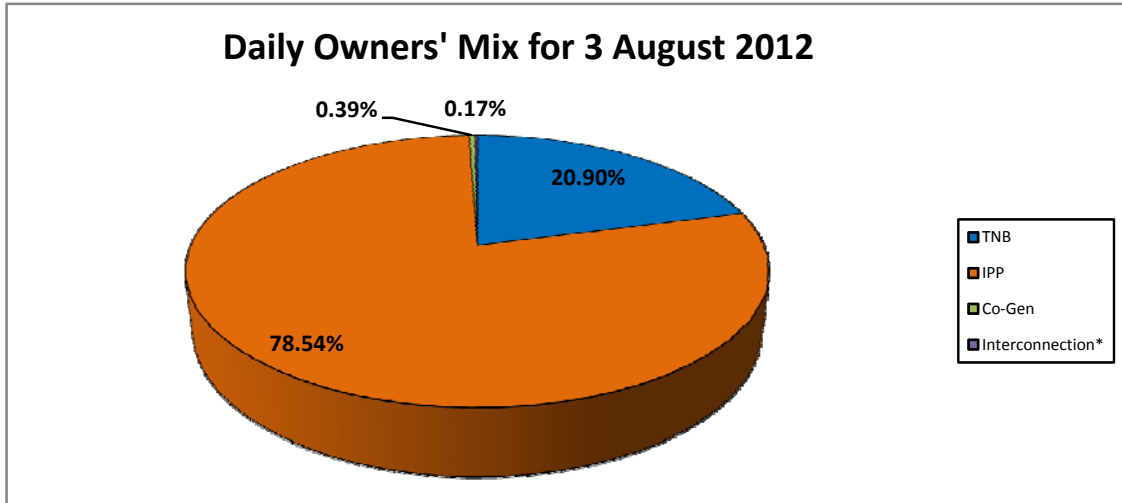
Electricity Supply & Market Regulations Dept.

Energy Commission Malaysia

04-Aug-12

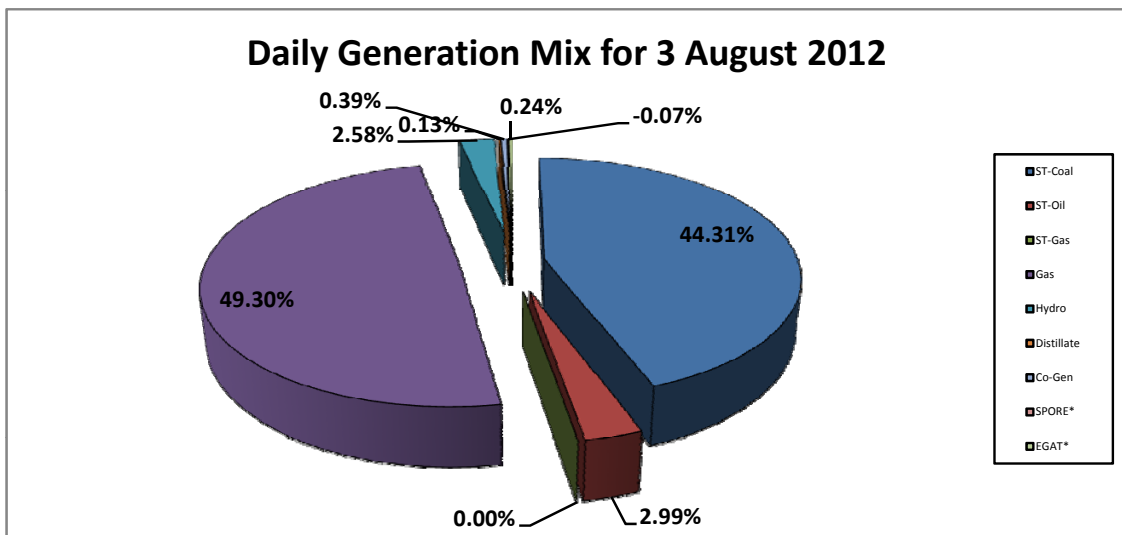
Daily Owners' Mix for 3 August 2012

TNB	64,676 MWh
IPP	243,111 MWh
Co-Gen	1,218 MWh
Interconnection*	519 MWh



Daily Generation Mix for 3 August 2012

ST-Coal	137,327 MWh
ST-Oil	9,266 MWh
ST-Gas	- MWh
Gas	152,801 MWh
Hydro	8,002 MWh
Distillate	391 MWh
Co-Gen	1,218 MWh
SPORE*	(213) MWh
EGAT*	732 MWh



*Negative = energy is imported from Singapore and Thailand
 Positive = energy is exported to Singapore and Thailand