

**GRID SYSTEM OPERATION SUMMARY (PENINSULAR MALAYSIA)**

	<b>FORECAST</b>	<b>ACTUAL</b>	<b>VARIANCE</b>	
<b>Maximum Demand for 1 August 2012</b>	14,956 MW	15,078 MW	0.82%	
<b>Energy Demand for 1 August 2012</b>	314.80 GWh	314.56 GWh	-0.08%	
<b>Highest Maximum Demand (20 June 2012)</b>	15,685 MW	15,826 MW	0.90%	<b>*New MD</b>
<b>Highest Daily Energy Demand (20 June 2012)</b>	326.75 GWh	328.72 GWh	0.60%	<b>*New Energy</b>

Prepared by:

Electricity Market Operations

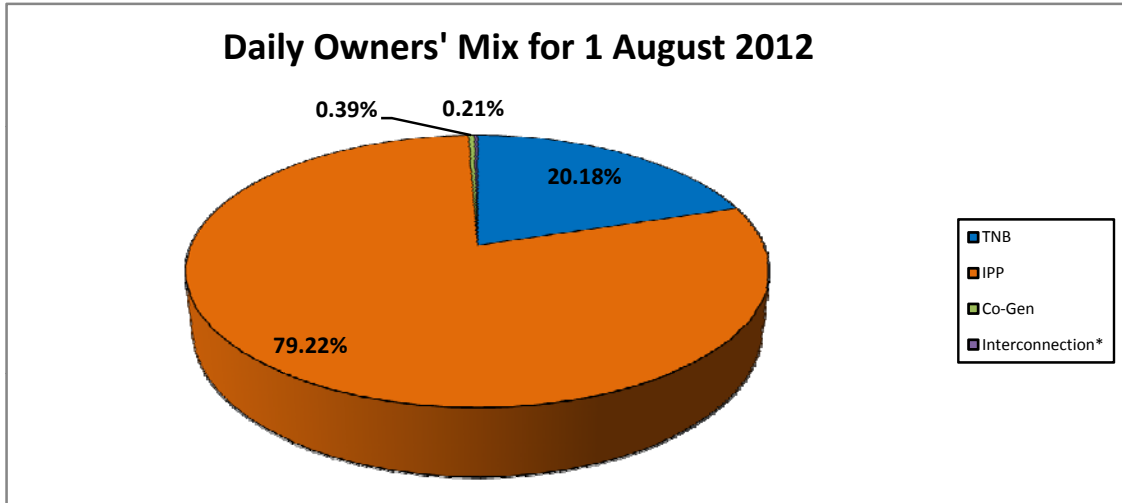
Electricity Supply & Market Regulations Dept.

Energy Commission Malaysia

02-Aug-12

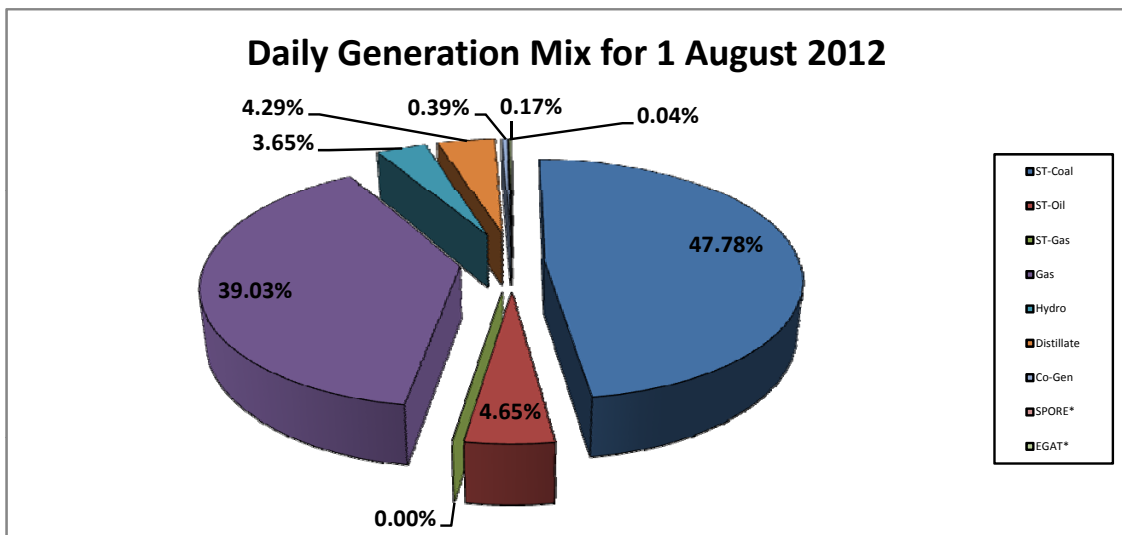
**Daily Owners' Mix for 1 August 2012**

TNB	63,743 MWh
IPP	250,242 MWh
Co-Gen	1,239 MWh
Interconnection*	666 MWh



**Daily Generation Mix for 1 August 2012**

ST-Coal	150,948 MWh
ST-Oil	14,686 MWh
ST-Gas	- MWh
Gas	123,283 MWh
Hydro	11,528 MWh
Distillate	13,540 MWh
Co-Gen	1,239 MWh
SPORE*	118 MWh
EGAT*	548 MWh



\*Negative = energy is imported from Singapore and Thailand  
 Positive = energy is exported to Singapore and Thailand