

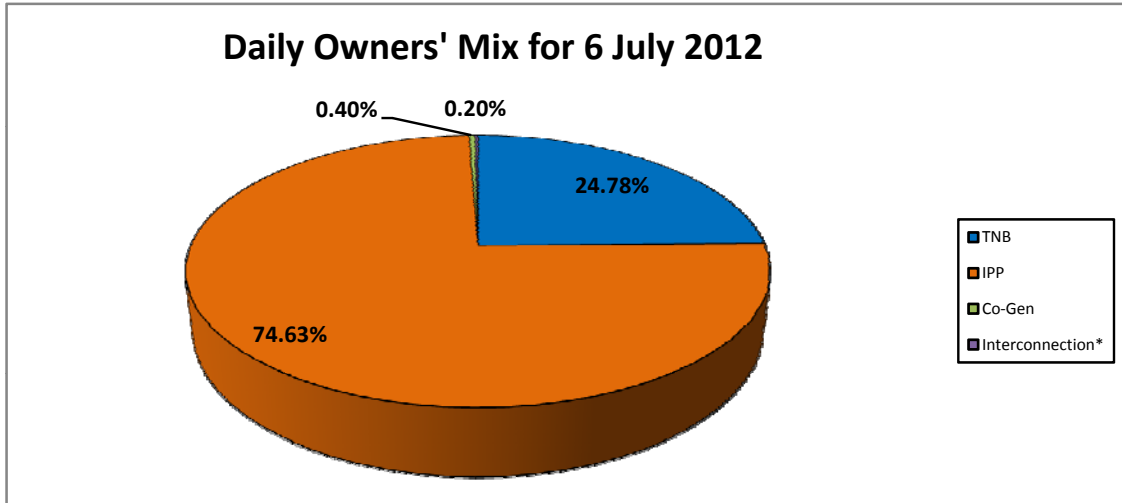
**GRID SYSTEM OPERATION SUMMARY (PENINSULAR MALAYSIA)**

	<b>FORECAST</b>	<b>ACTUAL</b>	<b>VARIANCE</b>	
<b>Maximum Demand for 6 July 2012</b>	14,882 MW	14,706 MW	-1.18%	
<b>Energy Demand for 6 July 2012</b>	310.99 GWh	306.08 GWh	-1.58%	
<b>Highest Maximum Demand (20 June 2012)</b>	15,685 MW	15,826 MW	0.90%	<b>*New MD</b>
<b>Highest Daily Energy Demand (20 June 2012)</b>	326.75 GWh	328.72 GWh	0.60%	<b>*New Energy</b>

Prepared by:  
Electricity Market Operations  
Electricity Supply & Market Regulations Dept.  
Energy Commission Malaysia  
07-Jul-12

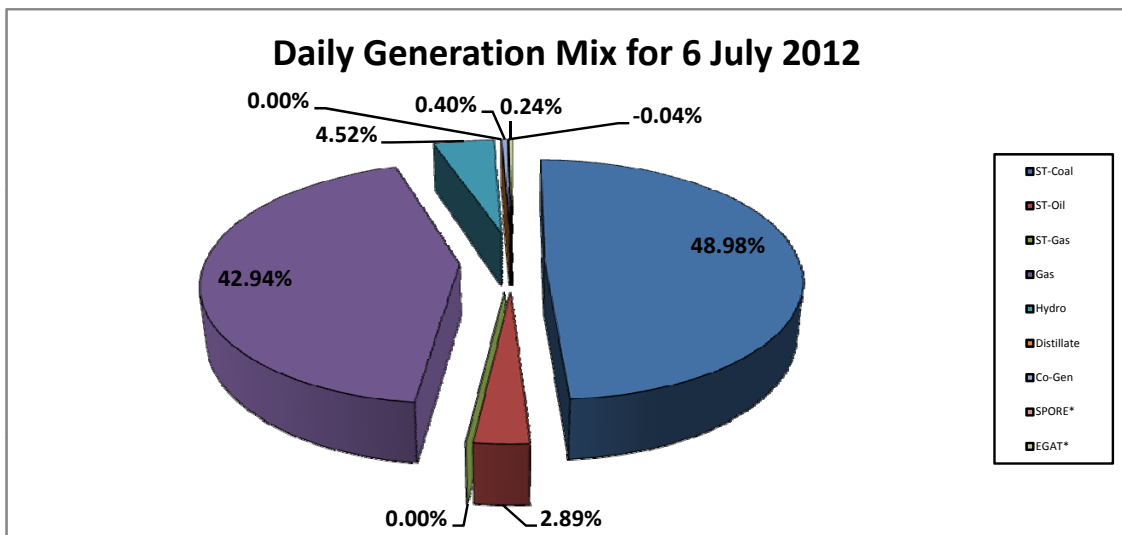
**Daily Owners' Mix for 6 July 2012**

TNB	76,142 MWh
IPP	229,345 MWh
Co-Gen	1,220 MWh
Interconnection*	605 MWh



**Daily Generation Mix for 6 July 2012**

ST-Coal	150,653 MWh
ST-Oil	8,889 MWh
ST-Gas	- MWh
Gas	132,052 MWh
Hydro	13,893 MWh
Distillate	- MWh
Co-Gen	1,220 MWh
SPORE*	(125) MWh
EGAT*	730 MWh



\*Negative = energy is imported from Singapore and Thailand  
 Positive = energy is exported to Singapore and Thailand