

New Application to Import/Manufacture (COA)

A. Application Procedure

- 1) Applicant is required to apply for Certificate of Approval (COA) through e-Permit <http://epermit.dagangnet.com>.
- 2) Applicant shall refer to Dagang Net Technologies Sdn Bhd for details on online registrations at toll free 1-300-133-133.
- 3) Applicant is required to apply for Certificate of Registration prior to him/her applying for COA.
- 4) Details for application to be a registered Manufacturer/Importer can be referred to "Application Procedure for COR".
- 5) Applicant shall complete the application by providing all information correctly and attach all required documents.
- 6) Information such as Name of Electrical Equipment, Brand and Model shall not be correct or else application will be rejected.
- 7) Detailed steps on application procedures are available at e-Permit website on Trader Module User Guide.
- 8) Technical documents required for COA to manufacture and import are as follows:
 - Type Test Report validity period not exceed five (5) years from the date of testing and shall not less than 12 month from the date of COA application;
 - List of components;
 - Instruction manual;
 - Technical specification and catalogue; and
 - Sample of the product, if requested.
- 9) Applicant shall pay RM30.00 as processing fee.

B. Type Test Report

- (i) Type Test Reports that are recognised by the Commission shall be produced by any of the following laboratories:-
 - 1) SIRIM QAS International Sdn. Bhd. (SIRIM) under Laboratory Accreditation Scheme of Malaysia (SAMM) by Department of Standards Malaysia (DSM); or
 - 2) QAV Technologies Sdn. Bhd. under SAMM by DSM; or

- 3) Laboratories under SAMM by DSM recognised by Energy Commission; or
 - 4) Laboratories under the IECEE CB Scheme. The list of the laboratories is available from the website <http://www.cbscheme.org>. The CB test report needs to be accompanied by a CB test certificate; or
 - 5) Laboratories (in the scope of its accreditation) which are accredited by the accreditation body that have signed the Asia Pacific Laboratory Accreditation Cooperation (APLAC) MRA – <http://www.aplac.org>. The test report needs to be accompanied with a conformation letter from the DSM; or
 - 6) Laboratories (in the scope of its accreditation) which are accredited by the accreditation body that have signed the International Laboratory Accreditation Cooperation (ILAC) MRA – <http://www.ilac.org>. The test report needs to be accompanied with a conformation letter from the DSM; or
 - 7) Laboratories (in the scope of its accreditation) listed as Designated Testing Laboratory(DTL) under ASEAN Sectoral Mutual Recognition Agreement for Electrical and Electronic Equipment (ASEAN EEE MRA); or
- (ii) For items (4), (5), (6) and (7), testing should include the national deviation in Malaysia. The requirements of national deviation are as stated below:-

a) Nominal Voltages and Frequency

- Nominal Voltage

Effective 1st Jan 2008, nominal voltage for low voltage supply in Malaysia is 230/400V(+10%, -6%) in accordance with MS IEC 60038. The details of voltages and variations are as below:-

	Nominal Voltage (V)	Percentage of Variations (%)		Voltage Variations (V)	
		+	-	Min.	Max.
Until 31/12/2007					
Single phase, 1 Ø	240	5	10	226	252
Three phase, 3 Ø	415	5	10	373.5	436
Commencing on 1/1/2008					
Single phase, 1 Ø	230	10	6	216	253
Three phase, 3 Ø	400	10	6	376	440

- Nominal Frequency

Nominal frequency for low voltage supply in Malaysia is allowed to fluctuate at $\pm 1\%$ from 50Hz.

b) Voltages and Frequency Marking for Regulated Equipment

In line with (a) above, electrical equipment to be used in Malaysia shall be designed to operate at the country's nominal voltage and frequency as follows:

- Voltage

Single-phase equipment shall be rated/marked at 230V or 240V. If the equipment is rated with multiple or a range of voltages, voltage range between 230V (+10%,-6%) shall be included.

Three-phase equipment shall be rated/marked at 400V or 415V. If the equipment is rated with multiple or a range of voltages, voltage range between 400V (+10%,-6%) shall be included.

- Frequency

The product shall be rated/marked at 50Hz and testing shall be conducted at 50Hz ($\pm 1\%$). If the product is marked with 50/60Hz or 50-60Hz then testing shall be conducted either at 50Hz or 60Hz, whichever is more unfavourable.

c) Testing Voltage and Frequency on Electrical Equipment

Type Test Report for Equipment:

The testing voltage shall be conducted by Conformity Assessment Body (CAB) at voltage variations as in the table below:

Single phase,1Ø	-	240V \pm 6%	:	(225.6 – 254.4) V
Three phase,3Ø	-	415V \pm 6%	:	(390.1 – 439.9) V
Single phase,1Ø	-	230V \pm 10%	:	(207 – 253) V
Three phase,3Ø	-	400V \pm 10%	:	(360 – 440) V

- Voltage

Single-phase equipment:

Testing shall be conducted based on 230V(+10%,-10%) or 240V (+6%,-6%) and other relevant voltages, whenever the equipment is marked with multiple or a range of voltages.

Three-phase equipment:

Testing shall be conducted based on 400V(+10%,-10%) or 415V(+6%,-6%), and other relevant voltages, whenever the equipment is marked with multiple or a range of voltages.

- Frequency

Testing shall be conducted either at 50Hz or 60Hz, whichever is more unfavourable.

(iii) Test report must be in either English or Malaysian language.

C. Annual Fee for New Application

An annual fee of RM220.00 for single phase and RM330.00 for three phase shall be paid upon approval of the COA as per Second Schedule, Part XIII, Regulation 97(4), Electricity (Amendment) Regulations 2014.

D. Requirement For Manufacture

Electrical equipment that has been approved for manufacturing shall participate in SIRIM's PCS. The electrical equipment shall be affixed with a label issued by SIRIM or bear the SIRIM Certification Mark.

E. Requirement For Importer

Electrical equipment that has been approved for import into Malaysia shall comply with the consignment test by SIRIM for each batch or participate in SIRIM's PCS within the validity period of the COA. The electrical equipment shall be affixed with labels issued by SIRIM or bear the SIRIM Certification Mark.

Electrical equipment which failed the Consignment Test need to be sent back to the country of origin or shall be destroyed.

Electrical equipment shall be constructed with power supply cord and power plug which comply with Malaysian requirements and standards.

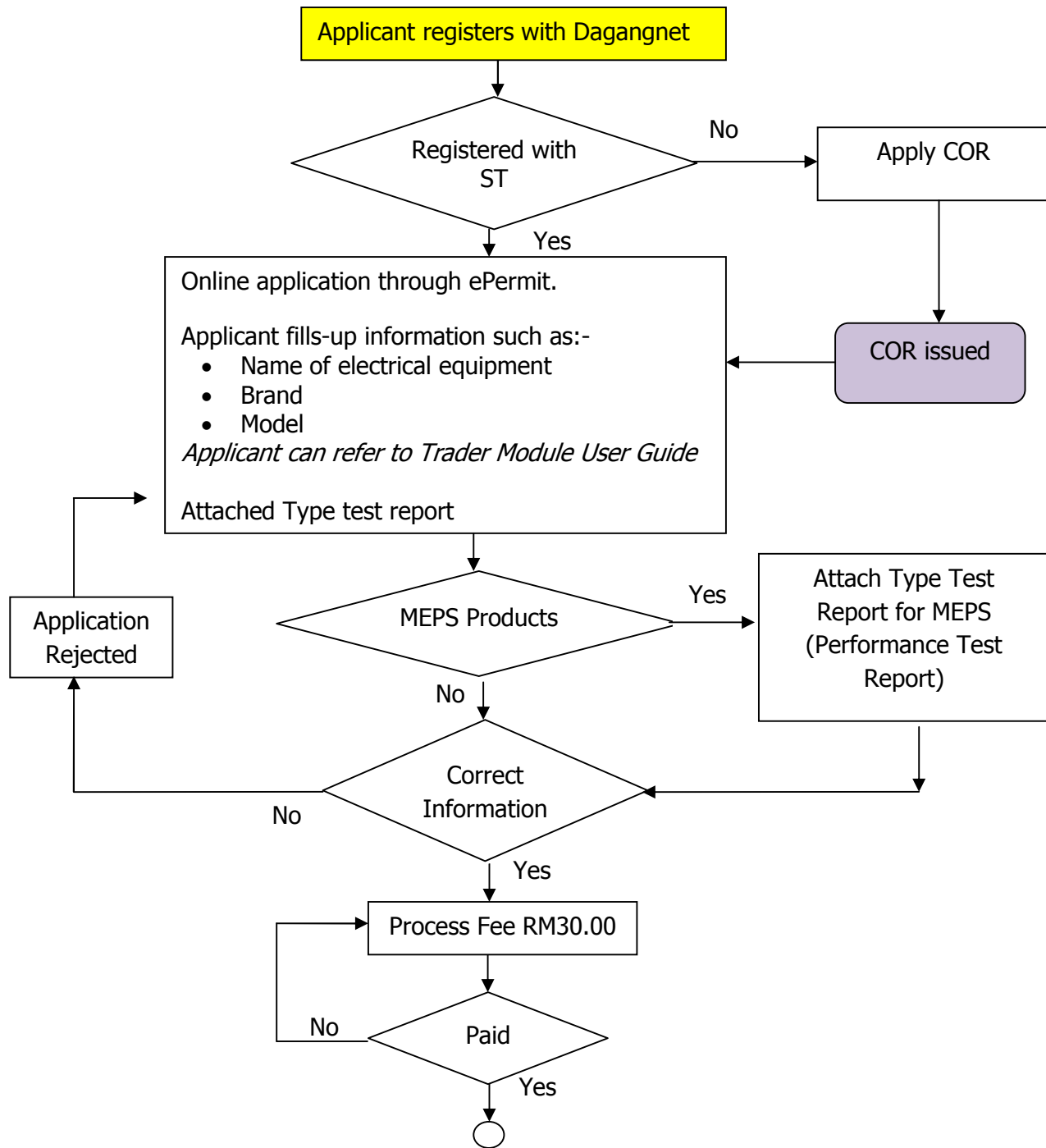
The requirements and standards of Power Supply Cords and Power Plugs are as stated below:-

Appliances shall be fitted with a suitable and appropriate power supply cord and power plug. Both are regulated equipment and must be approved by the regulatory body before it can be used on appliances.

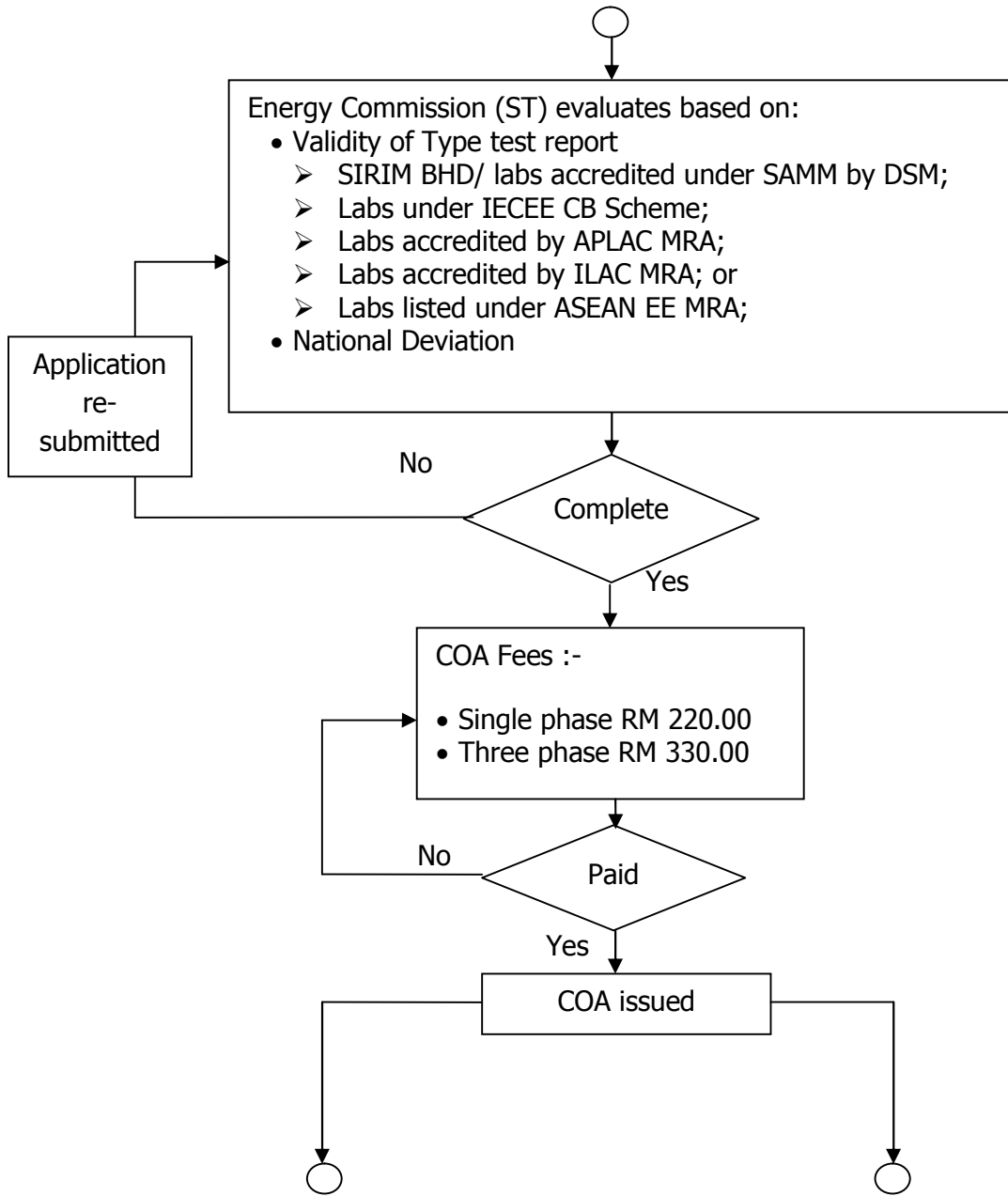
- 1) The Power Supply Cord shall be certified to :-
 - MS2112-5 or BS EN 50525-2-11 or IEC 60227-5 (PVC insulated - flexible cables/cords);or
 - MS 140 or MS 2127-4 or IEC 60245-1 & IEC 60245-4 (Rubber insulated - flexible cables/cords)

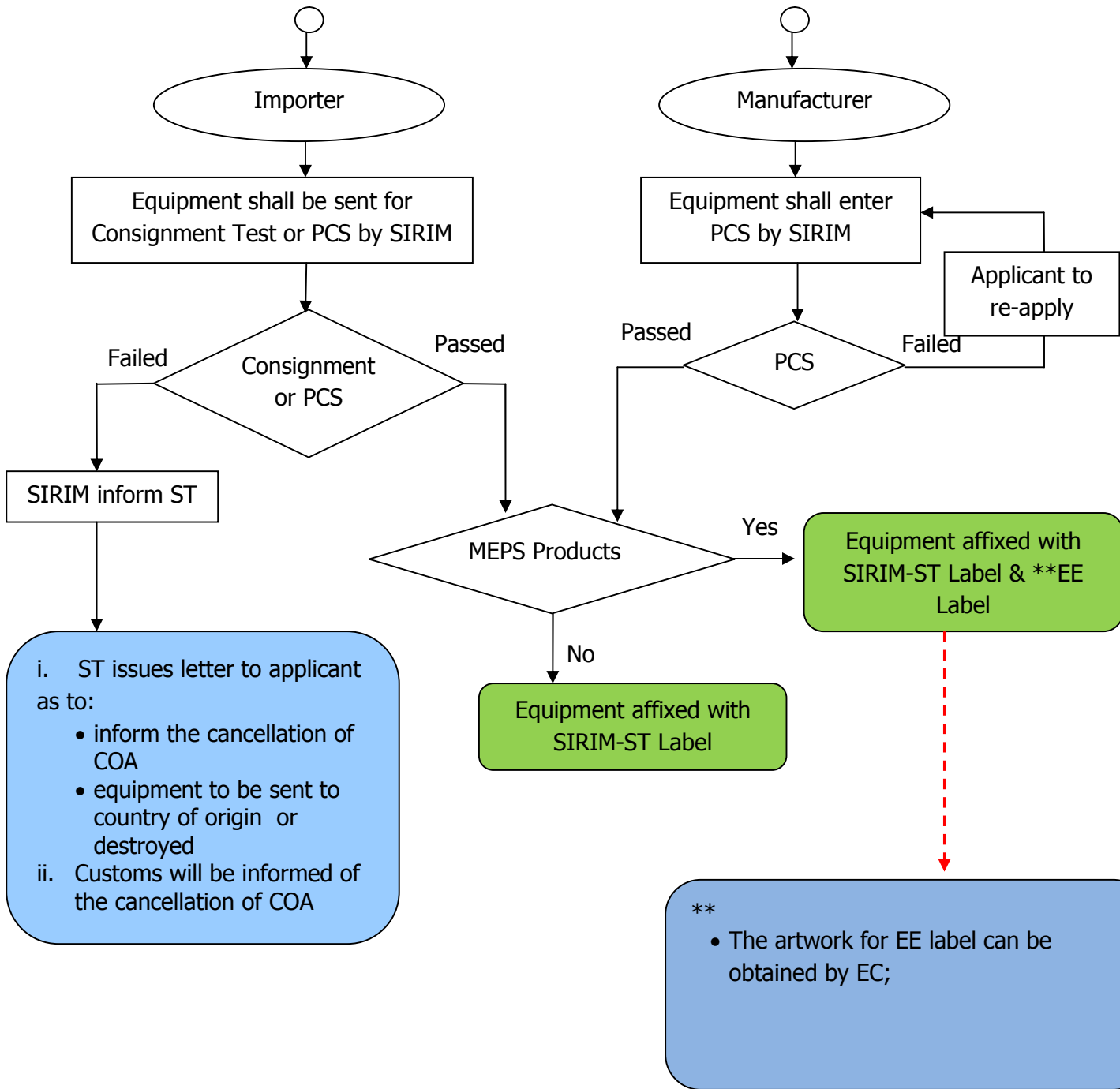
- 2) The Power Plug to be used in Malaysia shall be as follows:
 - 13A fused plug complying with MS 589-1 or BS 1363:PT.1;
 - 15A plugs complying with MS 1577;
 - 2.5A, 250V, flat non-rewireable two-pole plug with cord for the connection of class II equipment comply with MS 1578 or BS EN 50075.

Flow chart



COR = Certificate of Registration to Manufacture/Import





i. ST issues letter to applicant as to:

- inform the cancellation of COA
- equipment to be sent to country of origin or destroyed

ii. Customs will be informed of the cancellation of COA

- The artwork for EE label can be obtained by EC;